

# mCherry-Tag Rabbit Polyclonal Antibody

## Catalog No.: RTA57

### Basic Information

#### Information

Reactivity	N/A
Immunogen	Recombinant Protein
Host	Rabbit
Isotype	IgG
Storage Buffer & Condition	1mg/ml in PBS, pH 7.4, containing 0.02% sodium azide and 50% glycerol.
Observed MW	N/A

#### Applications

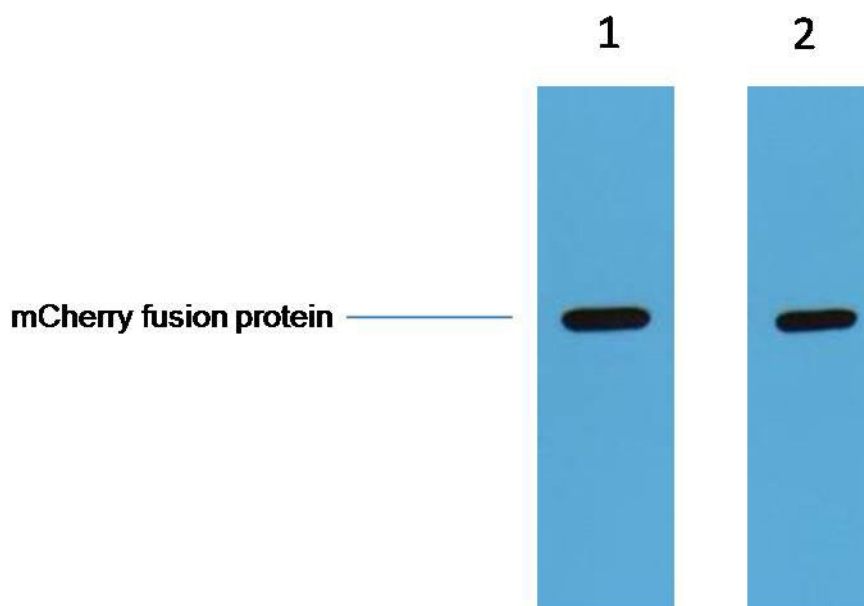
#### Recommended Dilution

WB	1:5,000
----	---------

#### Preparation & Storage

Storage	Store at -20°C. Stable for one year from the date of shipment.
Shipping	Bule Ice

## Experimental Data



1ug mCherry fusion protein+ Primary antibody dilution at 1、 1:5,000 2、 1:10,000

## Background

mCherry is a fluorophore (a fluorescent molecule) used in biotechnology as a tracer to follow the flow of fluids, as a marker when tagged to molecules and cells components. mCherry is a monomeric fluorescent construct with peak absorption/emission at 587 nm and 610 nm, respectively. It is resistant to photobleaching and is stable. mCherry is sometimes preferred to other fluorophores due to its colour, as well as its photostability compared to other monomeric fluorophores.