

E2-Tag Mouse Monoclonal Antibody(4F8)

Catalog No.: RTA31

Basic Information

Information

Reactivity	N/A
Immunogen	Synthetic Peptide
Host	Mouse
Isotype	IgG1
Storage Buffer & Condition	1mg/ml in PBS, pH 7.4, containing 0.02% sodium azide and 50% glycerol.
Observed MW	N/A

Applications

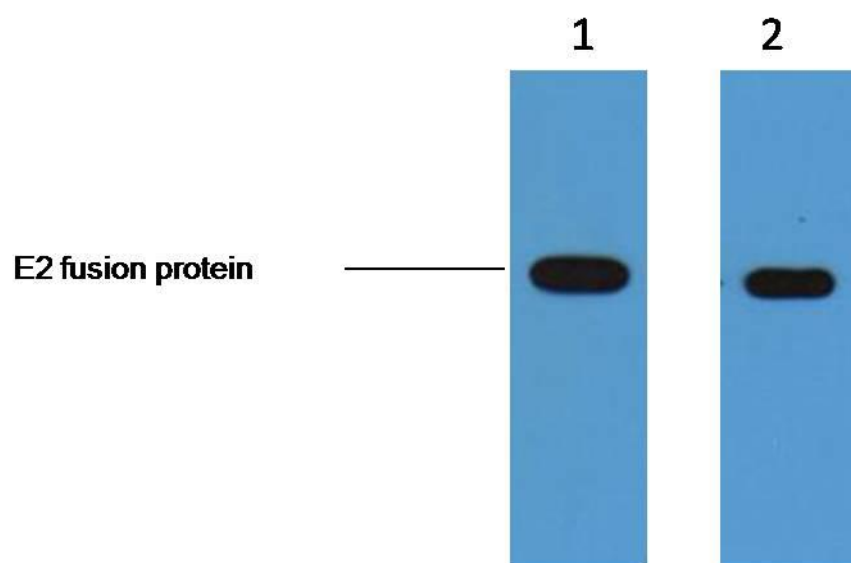
Recommended Dilution

WB	1:5,000
----	---------

Preparation & Storage

Storage	Store at -20°C. Stable for one year from the date of shipment.
Shipping	Bule Ice

Experimental Data



2ug E2 fusion protein+ Primary antibody dilution at 1、 1:5,000 2、 1:10,000

Background

E2-tag peptide GVSSTSSDFRDR conjugated to KLH. E2- Tag antibody can recognize C-terminal, internal, and N-terminal E2-tagged proteins.