

# Yeast GAPDH Rabbit Polyclonal Antibody

## Catalog No.: RCA70

### Basic Information

#### Information

Reactivity	Yeast(H,M,R)
Immunogen	Recombinant Protein
Host	Rabbit
Isotype	IgG
Storage Buffer & Condition	1mg/ml in PBS, pH 7.4, containing 0.02% sodium azide and 50% glycerol.
Observed MW	38KD

#### Applications

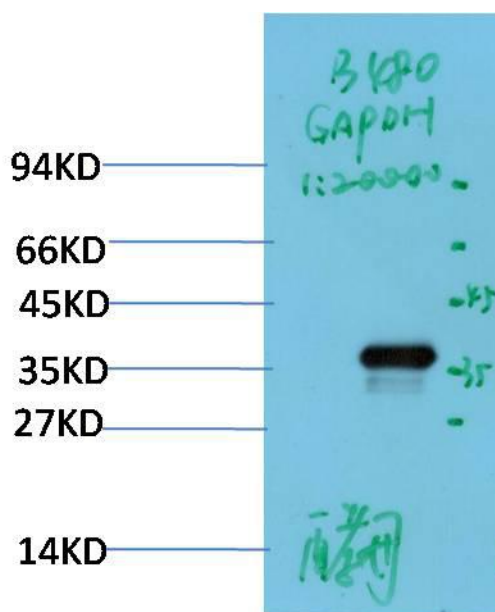
#### Recommended Dilution

WB	1:10,000-20,000
----	-----------------

#### Preparation & Storage

Storage	Store at -20°C. Stable for one year from the date of shipment.
Shipping	Bule Ice

## Experimental Data



Western blot analysis of Yeast Lysate using Yeast GAPDH Rabbit pAb diluted at 1:20,000.

## Background

Glyceraldehyde 3 phosphate dehydrogenase (GAPDH) is well known as one of the key enzymes involved in glycolysis. GAPDH is constitutively expressed in almost all tissues at high levels, therefore antibodies against GAPDH are useful as loading controls for Western Blotting. Some physiological factors, such as hypoxia and diabetes, increase GAPDH expression in certain cell types.