

β-actin Rabbit Polyclonal Antibody(A283)

Catalog No.: RCA61

Basic Information

Information

Reactivity	H,M,R
Immunogen	Synthetic Peptide
Host	Rabbit
Isotype	IgG
Storage Buffer & Condition	1mg/ml in PBS, pH 7.4, containing 0.02% sodium azide and 50% glycerol.
Observed MW	43KD

Applications

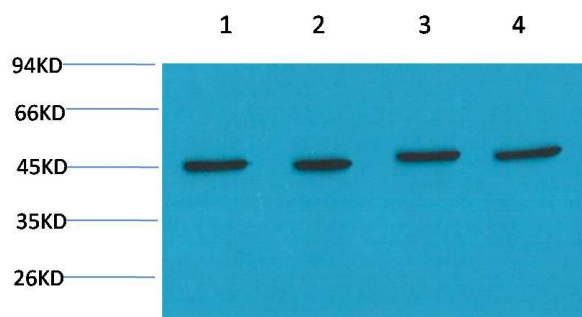
Recommended Dilution

WB	1:2,000-5,000
IHC	1:100-200

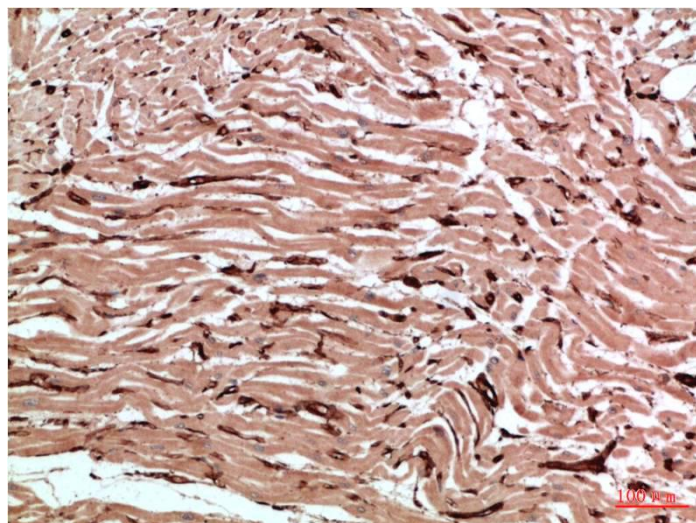
Preparation & Storage

Storage	Store at -20°C. Stable for one year from the date of shipment.
Shipping	Bule Ice

Experimental Data



Western blot analysis of 1) Hela Cell Lysate, 2) C2C12 Cell Lysate, 3) PC12 Cell Lysate, 4) Rat Brain Tissue Lysate using β -actin Rabbit pAb diluted at 1:5000.



Immunohistochemical analysis of paraffin-embedded Human Breast Carcinoma Tissue using β -actin Rabbit pAb diluted at 1:200.

Background

β -actin is one of six different actin isoforms that have been identified. The actin molecules found in cells of various species and tissues tend to be very similar in their immunological and physical properties. Therefore, antibodies against β -actin are useful as loading controls for Western Blotting. However it should be noted that levels of β -actin may not be stable in certain cells. For example, expression of β -actin in adipose tissue is very low and therefore β -actin should not be used as loading control for these tissues.