

α -tubulin Rabbit Polyclonal Antibody

Catalog No.: RCA60

Basic Information

Information

Reactivity	H,M,R
Immunogen	Recombinant Protein
Host	Rabbit
Isotype	IgG
Storage Buffer & Condition	1mg/ml in PBS, pH 7.4, containing 0.02% sodium azide and 50% glycerol.
Observed MW	52KD

Applications

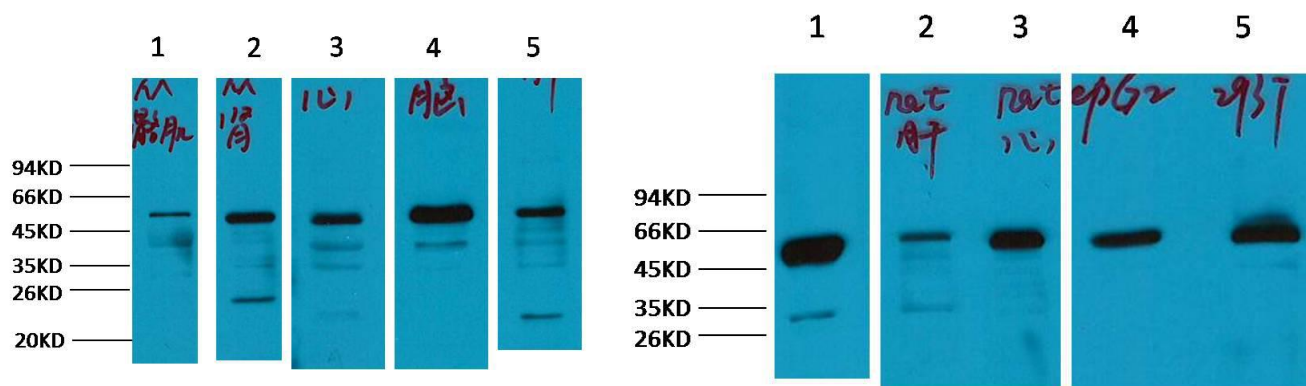
Recommended Dilution

WB	1:2,000
IHC	1:200

Preparation & Storage

Storage	Store at -20°C. Stable for one year from the date of shipment.
Shipping	Bule Ice

Experimental Data



Western blot analysis of 1) Mouse skeletal muscle tissue, 2) Mouse kidney tissue, 3) Mouse Heart Tissue, 4) Mouse brain tissue, 5) Mouse Liver tissue with α -tubulin Rabbit pAb diluted at 1:2,000.

Western blot analysis of 1) Rat Brain tissue, 2) Rat Liver tissue, 3) Rat Heart Tissue, 4) HepG2, 5) 293T, with α -tubulin Rabbit pAb diluted at 1:2,000.

Background

Tubulin is one of several members of a small family of globular proteins. The most common members of the tubulin family are α -tubulin and β -tubulin, the proteins that make up microtubules. Each has a molecular weight of approximately 55 kiloDaltons. Microtubules are assembled from dimers of α - and β -tubulin.