

β-actin Rabbit Polyclonal Antibody

Catalog No.: RCA58

Basic Information

Information

Reactivity	H,M,R,Mk,Ch,Hm,Sh,Xenopus
Immunogen	Recombinant Protein
Host	Rabbit
Isotype	IgG
Storage Buffer & Condition	1mg/ml in PBS, pH 7.4, containing 0.02% sodium azide and 50% glycerol.
Observed MW	43KD

Applications

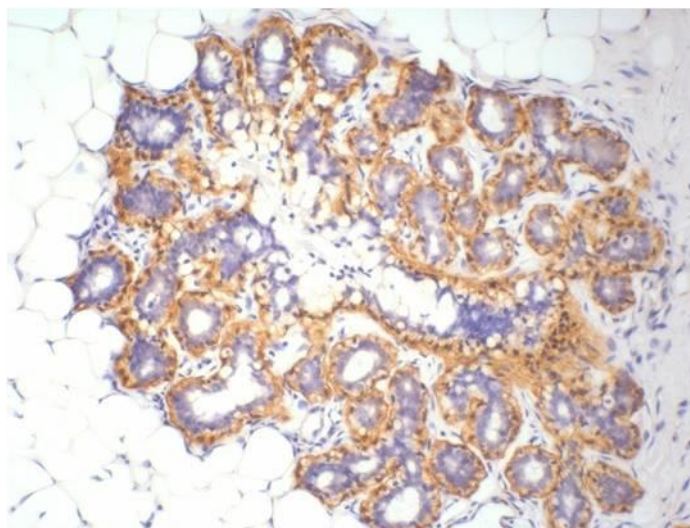
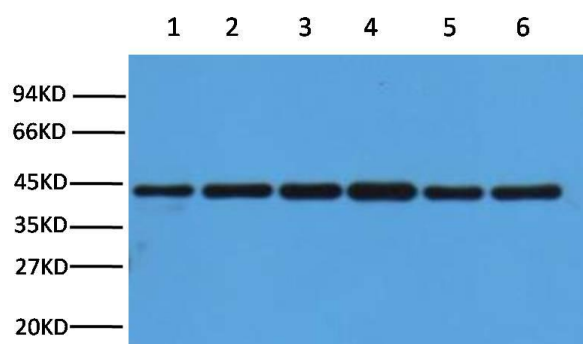
Recommended Dilution

WB	1:3,000
IHC	1:200
IF	1:200

Preparation & Storage

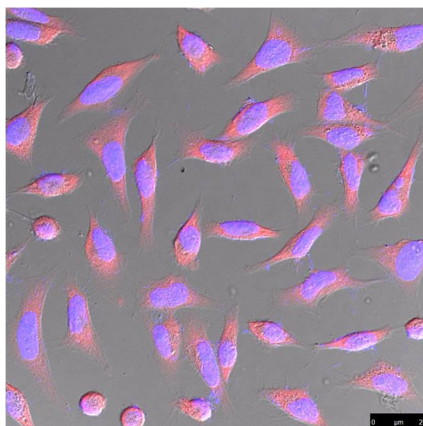
Storage	Store at -20°C. Stable for one year from the date of shipment.
Shipping	Bule Ice

Experimental Data



Western blot analysis of HepG2 (1) , Rat liver (2) ,Mouse kidney (3) , Rabbit testis(4), Sheep lung(5), 293T(6) with β -Actin rabbit polyclonal antibody diluted at 1:5000.

IHC staining of Human ovary tissue with β -Actin pAb diluted at 1:200.



IF analysis of HeLa with β -actin Rabbit Polyclonal Antibody diluted at 1:500.

Background

β -Actin is one of six different actin isoforms that have been identified. The actin molecules found in cells of various species and tissues tend to be very similar in their immunological and physical properties. Therefore, Antibodies against β -Actin are useful as loading controls for Western Blotting. However it should be noted that levels of β -Actin may not be stable in certain cells. For example, expression of β -Actin in adipose tissue is very low and therefore β -Actin should not be used as loading control for these tissues.