

GAPDH Rabbit Polyclonal Antibody(G04-For Bacterium)

Catalog No.: RCA56

Basic Information

Information

Reactivity	H,M,R,Bacterium
Immunogen	Recombinant Protein
Host	Rabbit
Isotype	IgG
Storage Buffer & Condition	1mg/ml in PBS, pH 7.4, containing 0.02% sodium azide and 50% glycerol.
Observed MW	37KD

Applications

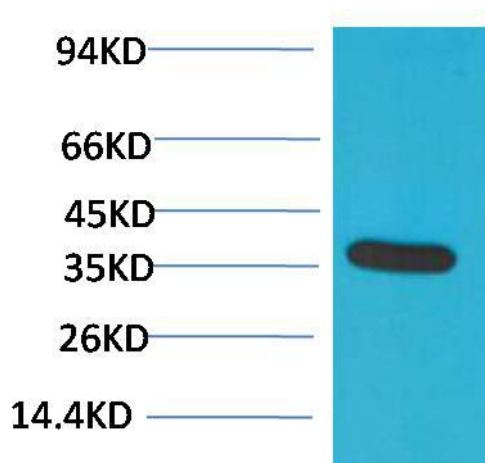
Recommended Dilution

WB	1:5,000-10,000
IHC	1:200-500

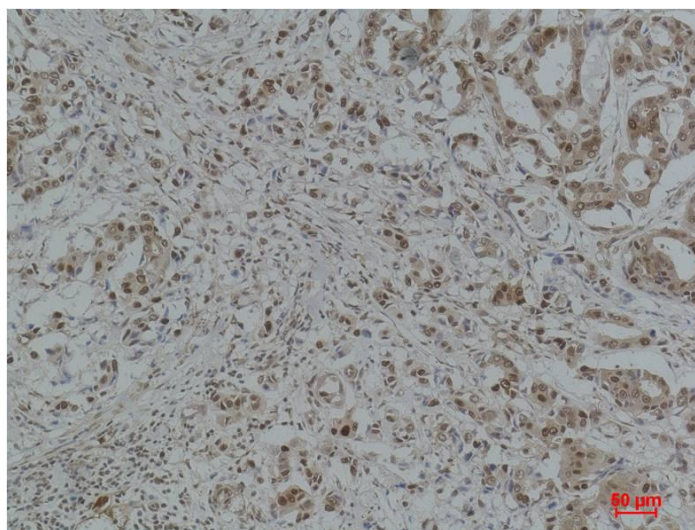
Preparation & Storage

Storage	Store at -20°C. Stable for one year from the date of shipment.
Shipping	Bule Ice

Experimental Data



Western blot analysis of Hela with GAPDH Rabbit pAb diluted at 1:10,000.



Immunohistochemical analysis of paraffin-embedded Human Breast Carcinoma using GAPDH Rabbit pAb diluted at 1:500.

Background

Glyceraldehyde 3 phosphate dehydrogenase (GAPDH) is well known as one of the key enzymes involved in glycolysis. GAPDH is constitutively expressed in almost all tissues at high levels, therefore antibodies against GAPDH are useful as loading controls for Western Blotting. Some physiological factors, such as hypoxia and diabetes, increase GAPDH expression in certain cell types.