

# $\beta$ Tubulin Rabbit Polyclonal Antibody

Catalog No.: RCA53

## Basic Information

### Information

Reactivity	H,M,R
Immunogen	Recombinant Protein
Host	Rabbit
Isotype	IgG
Storage Buffer & Condition	1mg/ml in PBS, pH 7.4, containing 0.02% sodium azide and 50% glycerol.
Observed MW	55KD

### Applications

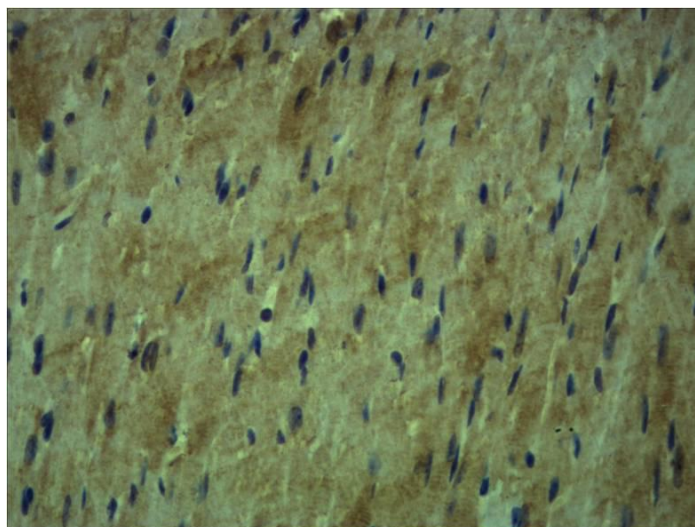
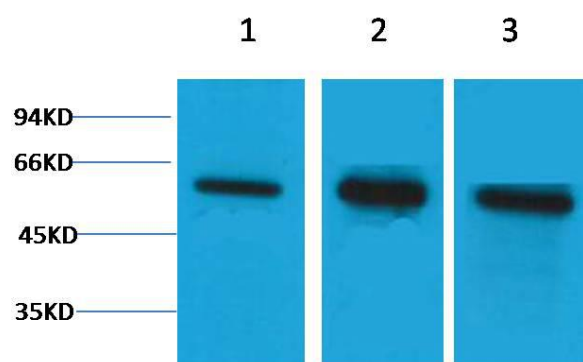
### Recommended Dilution

WB	1:2,000-5,000
IHC	1:500-1,000

## Preparation & Storage

Storage	Store at -20°C. Stable for one year from the date of shipment.
Shipping	Bule Ice

## Experimental Data



Western blot analysis of 1) HeLa, 2) Mouse Brain, 3) Rat Brain tissue with  $\beta$ -tubulin Rabbit pAb diluted at 1:5,000.

Immunohistochemical analysis of paraffin-embedded Mouse Heart Tissue using  $\beta$ -tubulin Rabbit pAb diluted at 1:500.

## Background

Microtubules are constituent parts of the mitotic apparatus, cilia, flagella, and elements of the cytoskeleton. They consist principally of 2 soluble proteins, alpha- and beta-tubulin, each of about 55,000 Da. Antibodies against beta Tubulin are useful as loading controls for Western Blotting. However it should be noted that levels of  $\beta$ -Tubulin may not be stable in certain cells. For example, expression of  $\beta$ -Tubulin in adipose tissue is very low and therefore  $\beta$ -Tubulin should not be used as loading control for these tissues.