

Bovine Serum Albumin Rabbit Polyclonal Antibody

Catalog No.: RCA52

Basic Information

Information

Reactivity	Cow,(H)
Immunogen	Recombinant Protein
Host	Rabbit
Isotype	IgG
Storage Buffer & Condition	1mg/ml in PBS, pH 7.4, containing 0.02% sodium azide and 50% glycerol.
Observed MW	66KD

Applications

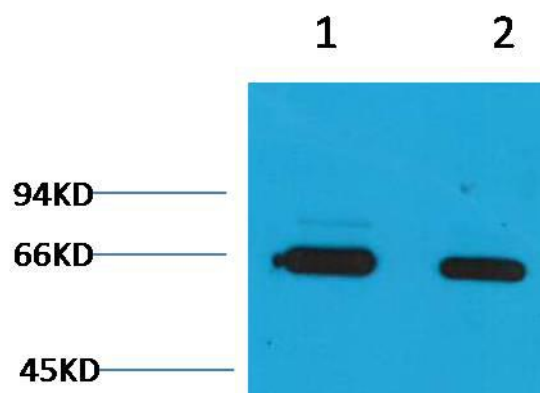
Recommended Dilution

WB	1:2,000-5,000
----	---------------

Preparation & Storage

Storage	Store at -20°C. Stable for one year from the date of shipment.
Shipping	Bule Ice

Experimental Data



Western blot analysis of Bovine Serum Albumin with Rabbit pAb diluted at 1) 1:2,000
2) 1:5,000

Background

Bovine serum albumin (also known as BSA or "Fraction V") is a serum albumin protein derived from cows. It is often used as a protein concentration standard in lab experiments. Albumin is a soluble, monomeric protein which comprises about one-half of the blood serum protein.