

# **β III Tubulin Rabbit Polyclonal Antibody**

**Catalog No.: RCA51**

## **Basic Information**

### **Information**

<b>Reactivity</b>	H,M,R
<b>Immunogen</b>	Synthetic Peptide
<b>Host</b>	Rabbit
<b>Isotype</b>	IgG
<b>Storage Buffer &amp; Condition</b>	1mg/ml in PBS, pH 7.4, containing 0.02% sodium azide and 50% glycerol.
<b>Observed MW</b>	50KD

### **Applications**

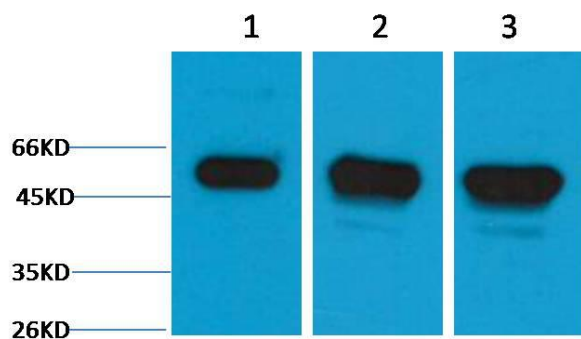
### **Recommended Dilution**

<b>WB</b>	1:2,000-5,000
<b>IHC</b>	1:200-500

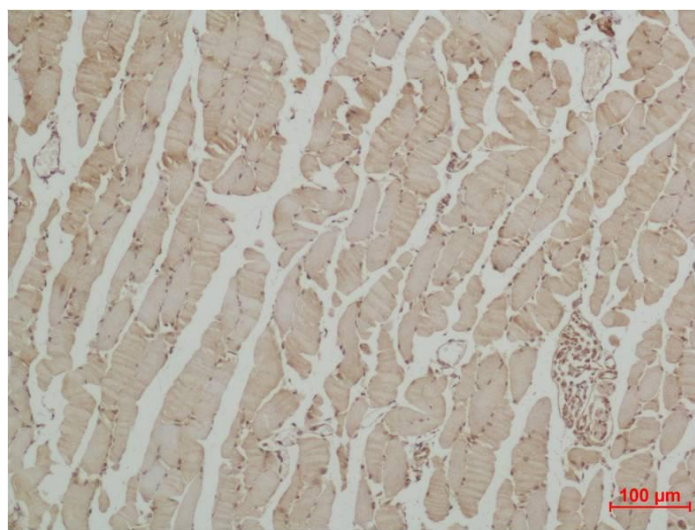
## **Preparation & Storage**

<b>Storage</b>	Store at -20°C. Stable for one year from the date of shipment.
<b>Shipping</b>	Bule Ice

## Experimental Data



Western blot analysis of 1) Hela, 2) Mouse Brain, 3) Rat Brain tissue with  $\beta$  III Tubulin Rabbit pAb diluted at 1:5,000.



Immunohistochemical analysis of paraffin-embedded Mouse Skeletal Muscle Tissue using  $\beta$  III Tubulin Rabbit pAb diluted at 1:500.

## Background

Tubulin is the major constituent of microtubules. It exists as a heterodimer consisting of an alpha and a beta subunit. TUBB3 plays a critical role in proper axon guidance and maintenance.