

β II Tubulin Rabbit Polyclonal Antibody

Catalog No.: RCA50

Basic Information

Information

Reactivity	H,M,R
Immunogen	Synthetic Peptide
Host	Rabbit
Isotype	IgG
Storage Buffer & Condition	1mg/ml in PBS, pH 7.4, containing 0.02% sodium azide and 50% glycerol.
Observed MW	50KD

Applications

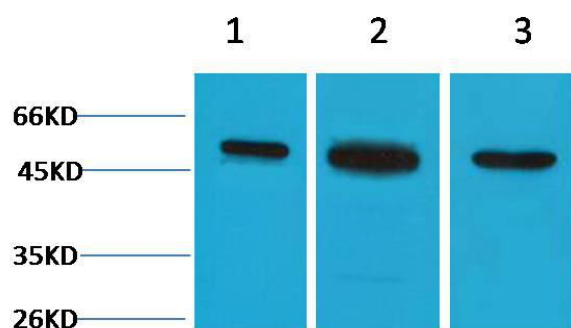
Recommended Dilution

WB	1:2,000-5,000
IHC	1:500-1,000

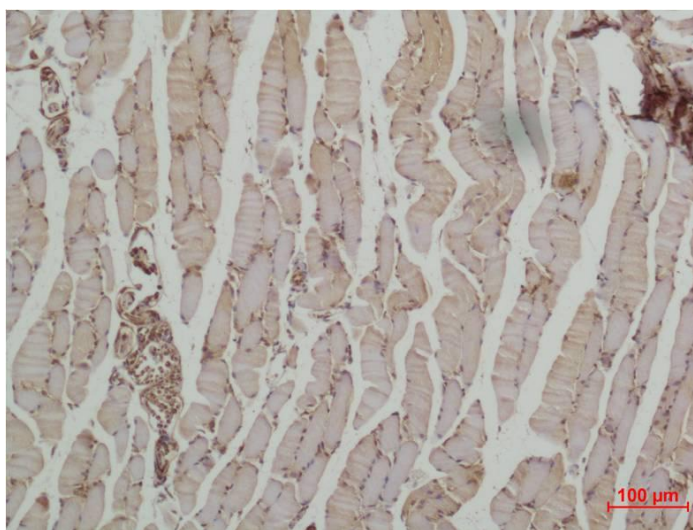
Preparation & Storage

Storage	Store at -20°C. Stable for one year from the date of shipment.
Shipping	Bule Ice

Experimental Data



Western blot analysis of 1) HeLa, 2) 3T3, 3) Rat Kidney tissue with β II Tubulin Rabbit pAb diluted at 1:3,000.



Immunohistochemical analysis of paraffin-embedded Mouse Skeletal Muscle Tissue using β II Tubulin Rabbit pAb diluted at 1:500.

Background

Tubulin is the major constituent of microtubules. It exists as a heterodimer consisting of an alpha and a beta subunit. Class II beta tubulin is the major form of tubulin beta in neurons, although it is not neuronal specific. It is found in many other tissues including lung tissue and Schwann cells.