

# Vinculin Rabbit Polyclonal Antibody

## Catalog No.: RCA49

### Basic Information

#### Information

Reactivity	H,M,R
Immunogen	Synthetic Peptide
Host	Rabbit
Isotype	IgG
Storage Buffer & Condition	1mg/ml in PBS, pH 7.4, containing 0.02% sodium azide and 50% glycerol.
Observed MW	130KD

#### Applications

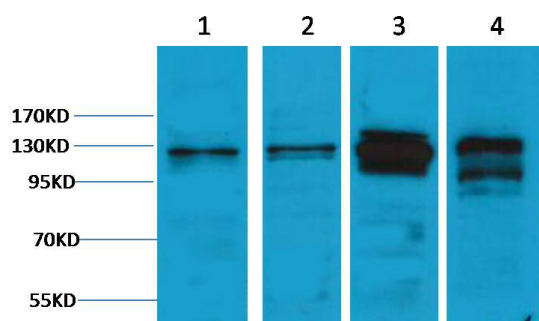
#### Recommended Dilution

WB	1:1,000-2,000
IHC	1:200-500

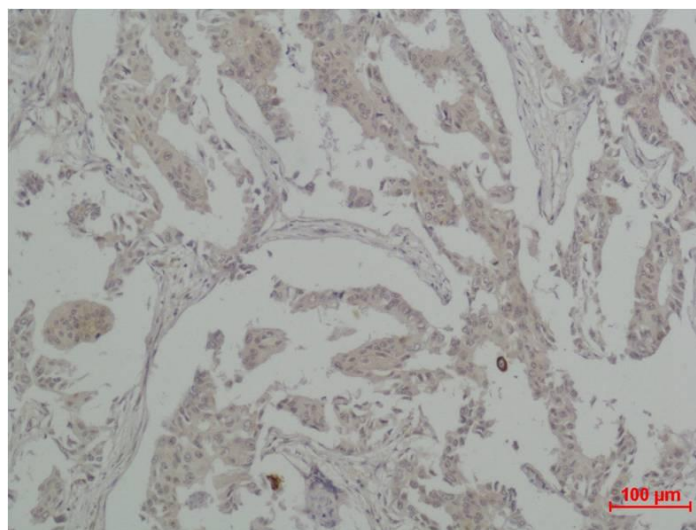
### Preparation & Storage

Storage	Store at -20°C. Stable for one year from the date of shipment.
Shipping	Bule Ice

## Experimental Data



Western blot analysis of 1) HeLa, 2) K562, 3) Mouse Brain, 4) Rat Brain tissue with Vinculin Rabbit pAb diluted at 1:1,000.



Immunohistochemical analysis of paraffin-embedded human Breast carcinoma using Vinculin Rabbit pAb diluted at 1:500.

## Background

Vinculin is a membrane-cytoskeletal protein in focal adhesion plaques that is involved in linkage of integrin adhesion molecules to the actin cytoskeleton. Vinculin is a cytoskeletal protein associated with cell-cell and cell-matrix junctions, where it is thought to function as one of several interacting proteins involved in anchoring F-actin to the membrane.