

# Plant actin Mouse Monoclonal Antibody(Q30)

Catalog No.: RCA46

## Basic Information

### Information

Reactivity	Arabidopsis,Nicotiana tabacum,Oryza sativa,Hordeum vulgare
Immunogen	Recombinant Protein
Host	Mouse
Isotype	IgG1
Storage Buffer & Condition	1mg/ml in PBS, pH 7.4, containing 0.02% sodium azide and 50% glycerol.
Observed MW	43KD

### Applications

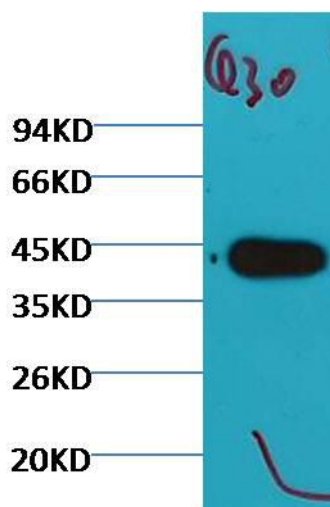
### Recommended Dilution

WB	1:2,000-5,000
----	---------------

## Preparation & Storage

Storage	Store at -20°C. Stable for one year from the date of shipment.
Shipping	Bule Ice

## Experimental Data



Western blot analysis of Arabidopsis with plant actin Mouse mAb (Q30) diluted at 1:5,000

## Background

Actin is a highly conserved protein and an essential component of cell cytoskeleton and plays an important role in cytoplasmic streaming, cell shape determination, cell division, organelle movement and extension growth. Preferentially expressed in young and expanding tissues, floral organ primordia, developing seeds and emerging inflorescence. Antibodies against plant Actin are useful as loading controls for Western Blotting.