

**Bovine Serum Albumin Mouse Monoclonal
Antibody(Mix-mA)
Catalog No.: RCA45**

Basic Information

Information

Reactivity	Cow
Immunogen	Protein
Host	Mouse
Isotype	IgG
Storage Buffer & Condition	1mg/ml in PBS, pH 7.4, containing 0.02% sodium azide and 50% glycerol.
Observed MW	66KD

Applications

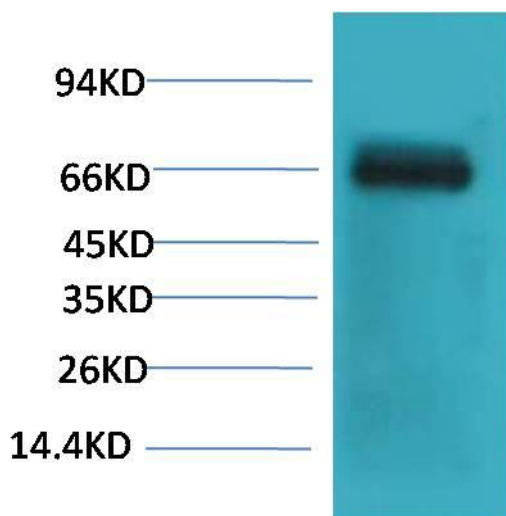
Recommended Dilution

WB	1:1,000-2,000
-----------	---------------

Preparation & Storage

Storage	Store at -20°C. Stable for one year from the date of shipment.
Shipping	Bule Ice

Experimental Data



Western blot analysis of Bovine Serum Albumin with Bovine Serum Albumin Mouse mAb diluted at 1:2,000

Background

Bovine serum albumin (also known as BSA or "Fraction V") is a serum albumin protein derived from cows. It is often used as a protein concentration standard in lab experiments. Albumin is a soluble, monomeric protein which comprises about one-half of the blood serum protein.