

Plant actin Mouse Monoclonal Antibody(Mix-mA™)

Catalog No.: RCA44

Basic Information

Information

| | |
|---------------------------------------|--|
| Reactivity | Arabidopsis,Nicotiana tabacum,Oryza sativa,Hordeum vulgare |
| Immunogen | Recombinant Protein |
| Host | Mouse |
| Isotype | IgG1 |
| Storage Buffer & Condition | 1mg/ml in PBS, pH 7.4, containing 0.02% sodium azide and 50% glycerol. |
| Observed MW | 43KD |

Applications

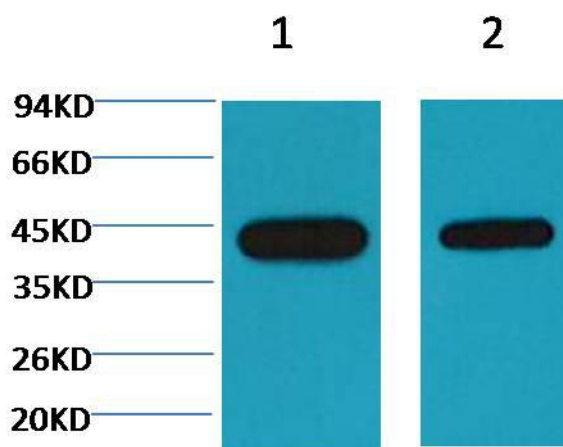
Recommended Dilution

| | |
|-----------|---------------|
| WB | 1:3,000-5,000 |
|-----------|---------------|

Preparation & Storage

| | |
|-----------------|--|
| Storage | Store at -20°C. Stable for one year from the date of shipment. |
| Shipping | Bule Ice |

Experimental Data



Western blot analysis of Arabidopsis with diluted at 1) 1:5,000 2) 1:10,000

Background

Actin is a highly conserved protein and an essential component of cell cytoskeleton and plays an important role in cytoplasmic streaming, cell shape determination, cell division, organelle movement and extension growth. Preferentially expressed in young and expanding tissues, floral organ primordia, developing seeds and emerging inflorescence. Antibodies against plant Actin are useful as loading controls for Western Blotting.