

α -tubulin Mouse Monoclonal Antibody (Zebrafish Specific)

Catalog No.: RCA34

Basic Information

Information

Reactivity	Zebrafish
Immunogen	Recombinant Protein
Host	Mouse
Isotype	IgG1
Storage Buffer & Condition	1mg/ml in PBS, pH 7.4, containing 0.02% sodium azide and 50% glycerol.
Observed MW	52KD

Applications

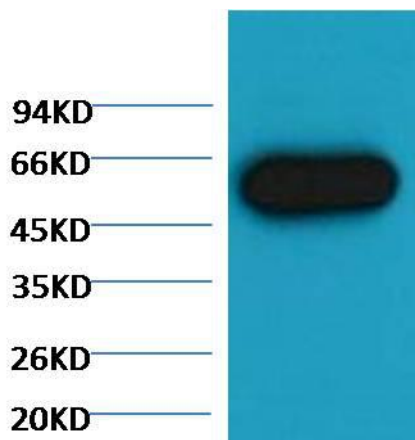
Recommended Dilution

WB	1:5,000-10,000
-----------	----------------

Preparation & Storage

Storage	Store at -20°C. Stable for one year from the date of shipment.
Shipping	Bule Ice

Experimental Data



Western blot analysis of Zebrafish skeletal muscle with α tubulin Mouse mAb(Zebrafish Specific) diluted at 1:5,000.

Background

Tubulin is one of several members of a small family of globular proteins. The tubulin superfamily includes five distinct families, the alpha-, beta-, gamma-, delta-, and epsilon-tubulins. The most common members of the tubulin family are α -tubulin and β -tubulin, the proteins that make up microtubules. Each has a molecular weight of approximately 55 KD. Microtubules are assembled from dimers of α - and β -tubulin.