

# **GAPDH Mouse Monoclonal Antibody(2B8)-HRP conjugated**

## **Catalog No.: RCA30**

### **Basic Information**

#### **Information**

<b>Reactivity</b>	H,M,R,Mk,Dg,Ch,Hm,Rb,Pg,Sh
<b>Immunogen</b>	Synthetic Peptide
<b>Host</b>	Mouse
<b>Isotype</b>	IgG1
<b>Storage Buffer &amp; Condition</b>	1mg/ml in PBS, pH 7.4, containing 0.02% Kathon and 50% glycerol.
<b>Observed MW</b>	37KD

#### **Applications**

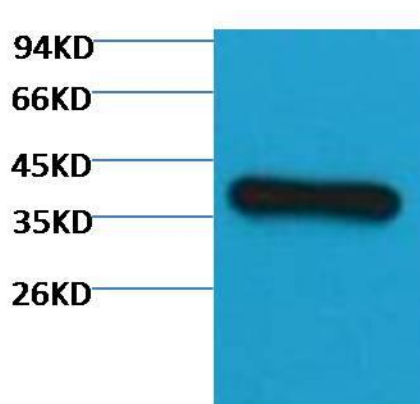
#### **Recommended Dilution**

<b>WB</b>	1:5,000
<b>IHC</b>	1:100

#### **Preparation & Storage**

<b>Storage</b>	Store at -20°C. Stable for one year from the date of shipment.
<b>Shipping</b>	Bule Ice

## Experimental Data



Western blot analysis of Hela with GAPDH Mouse Monoclonal Antibody(2B8)-HRP conjugated diluted at 1:3,000

## Background

Glyceraldehyde 3 phosphate dehydrogenase (GAPDH) is well known as one of the key enzymes involved in glycolysis. GAPDH is constitutively expressed in almost all tissues at high levels, therefore antibodies against GAPDH are useful as loading controls for Western Blotting. Some physiological factors, such as hypoxia and diabetes, increase GAPDH expression in certain cell types.