

β I tubulin Mouse Monoclonal Antibody(3F7)

Catalog No.: RCA28

Basic Information

Information

Reactivity	H,M,R
Immunogen	Synthetic Peptide
Host	Mouse
Isotype	IgG1
Storage Buffer & Condition	1mg/ml in PBS, pH 7.4, containing 0.02% sodium azide and 50% glycerol.
Observed MW	50KD

Applications

Recommended Dilution

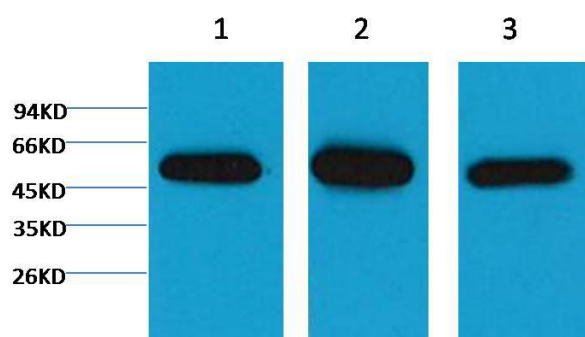
WB 1:5,000-10,000

IHC 1:200-500

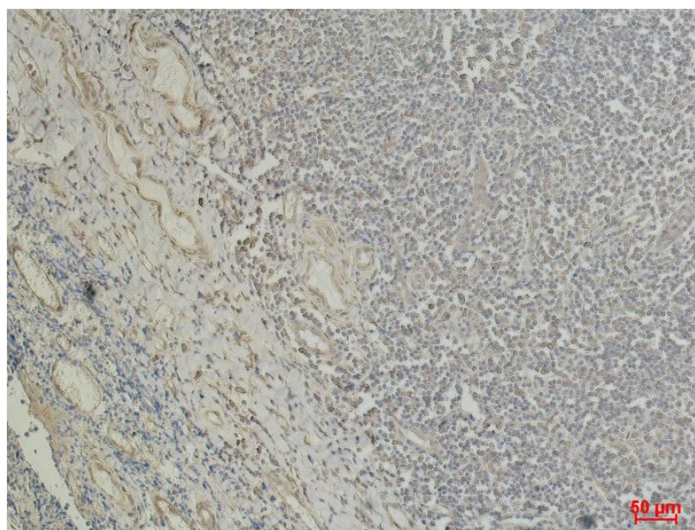
Preparation & Storage

Storage	Store at -20°C. Stable for one year from the date of shipment.
Shipping	Bule Ice

Experimental Data



Western blot analysis of 1) Hela, 2) Mouse Brain Tissue, 3) Rat Brain Tissue with β I tubulin Mouse Monoclonal Antibody(3F7) diluted at 1:5,000.



Immunohistochemical analysis of paraffin-embedded Human Tonsil Tissue using β I tubulin Mouse mAb diluted at 1:500.

Background

Tubulin is one of several members of a small family of globular proteins. The tubulin superfamily includes five distinct families, the alpha-, beta-, gamma-, delta-, and epsilon-tubulins. The most common members of the tubulin family are α -tubulin and β -tubulin, the proteins that make up microtubules. Each has a molecular weight of approximately 55 KD. Microtubules are assembled from dimers of α - and β -tubulin.