

GAPDH Mouse Monoclonal Antibody(2B8)

Catalog No.: RCA21

Basic Information

Information

Reactivity	H,M,R,Mk,Dg,Ch,Hm,Rb,Pg,Sh,Insect,Yeast
Immunogen	Synthetic Peptide
Host	Mouse
Isotype	IgG1
Storage Buffer & Condition	1mg/ml in PBS, pH 7.4, containing 0.02% sodium azide and 50% glycerol.
Observed MW	37KD

Applications

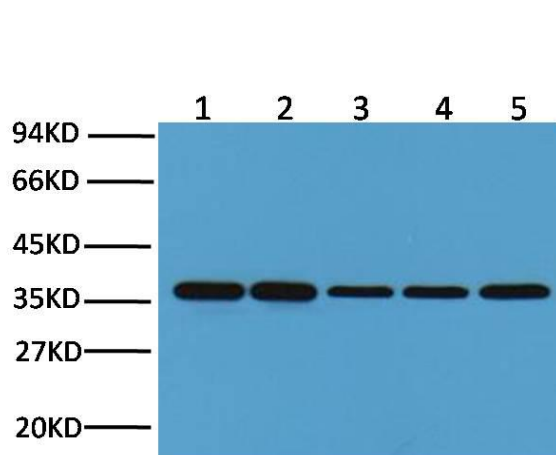
Recommended Dilution

WB	1:5,000
IHC	1:200

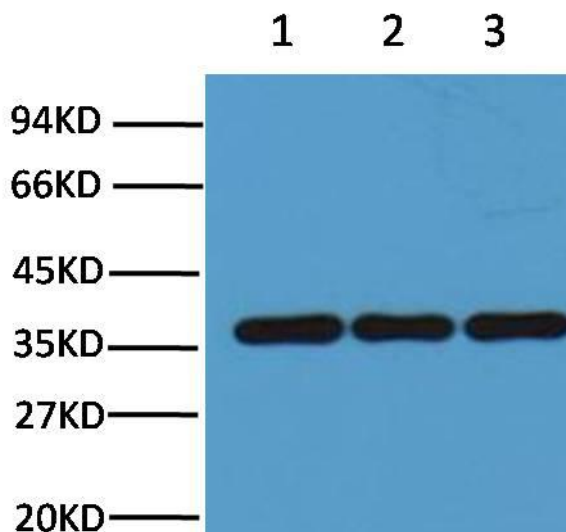
Preparation & Storage

Storage	Store at -20°C. Stable for one year from the date of shipment.
Shipping	Bule Ice

Experimental Data



Western blot analysis of Hela (1), Rat brain (2), Rabbit Muscle (3), Sheep Muscle (4), and Mouse brain (5) with GAPDH mouse mAb(2B8) diluted at 1:10,000.



Western blot analysis of Chicken Muscle (1), Hamster Lung (2), Pig Heart (3), with GAPDH mouse mAb(2B8) diluted at 1:10,000.

Background

Glyceraldehyde 3 phosphate dehydrogenase (GAPDH) is well known as one of the key enzymes involved in glycolysis. GAPDH is constitutively expressed in almost all tissues at high levels, therefore antibodies against GAPDH are useful as loading controls for Western Blotting. Some physiological factors, such as hypoxia and diabetes, increase GAPDH expression in certain cell types.