

**α -tubulin (Acetyl Lys40) Mouse Monoclonal
Antibody(5H5)
Catalog No.: RCA19**

Basic Information

Information

Reactivity	H,M,R
Immunogen	Synthetic Peptide
Host	Mouse
Isotype	IgG1
Storage Buffer & Condition	1mg/ml in PBS, pH 7.4, containing 0.02% sodium azide and 50% glycerol.
Observed MW	52KD

Applications

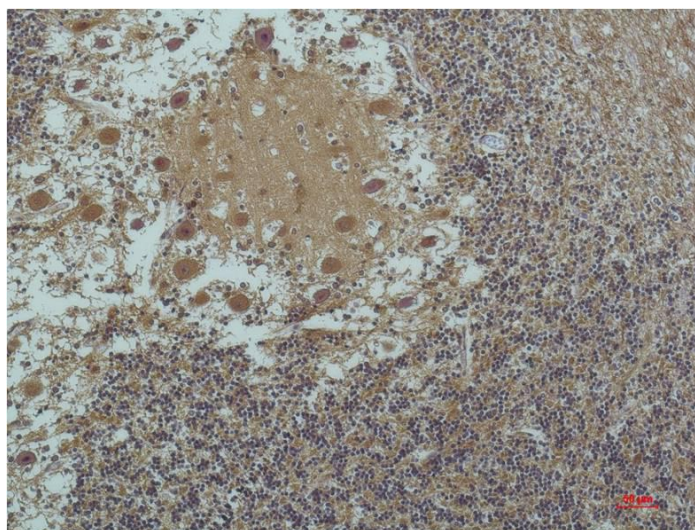
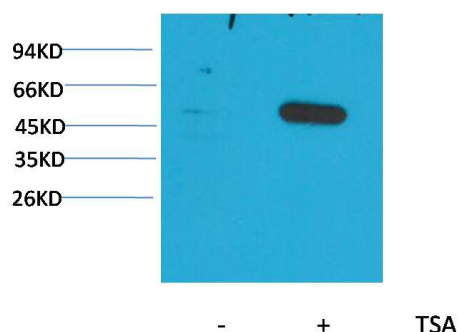
Recommended Dilution

WB	1:1,000-2,000
IHC	1:100-200
ELISA	1:1:10,000-50,000

Preparation & Storage

Storage	Store at -20°C. Stable for one year from the date of shipment.
Shipping	Bule Ice

Experimental Data



Western blot analysis of extracts from HeLa cells, untreated (-) or treated with TSA (1 μM, 18 hr; +), using Acetyl-α-tubulin(Lys40) Mouse mAb 1:2000.

Immunohistochemical analysis of paraffin-embedded Human Brain Tissue using α-tubulin(Acetyl Lys40) Mouse mAb diluted at 1:200.

Background

Tubulin is one of several members of a small family of globular proteins. The tubulin superfamily includes five distinct families, the alpha-, beta-, gamma-, delta-, and epsilon-tubulins. The most common members of the tubulin family are α-tubulin and β-tubulin, the proteins that make up microtubules. Each has a molecular weight of approximately 55 KD. Microtubules are assembled from dimers of α- and β-tubulin.