

α -tubulin (Acetyl Lys40) Mouse Monoclonal Antibody(4A8)

Catalog No.: RCA16

Basic Information

Information

Reactivity	H,M,R
Immunogen	Synthetic Peptide
Host	Mouse
Isotype	IgG1
Storage Buffer & Condition	1mg/ml in PBS, pH 7.4, containing 0.02% sodium azide and 50% glycerol.
Observed MW	52KD

Applications

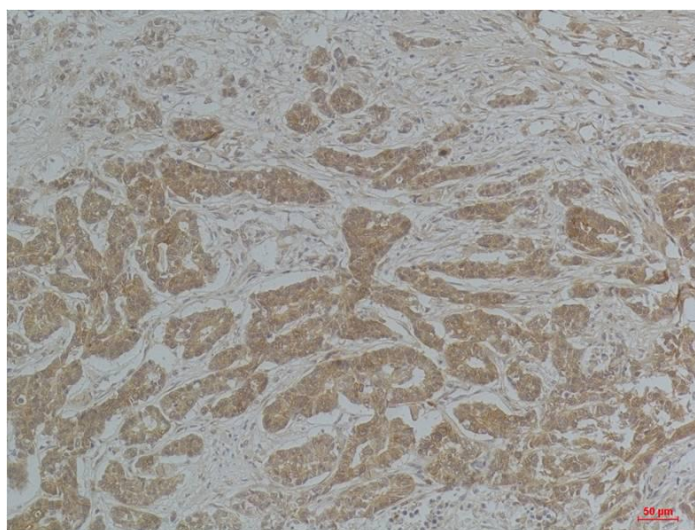
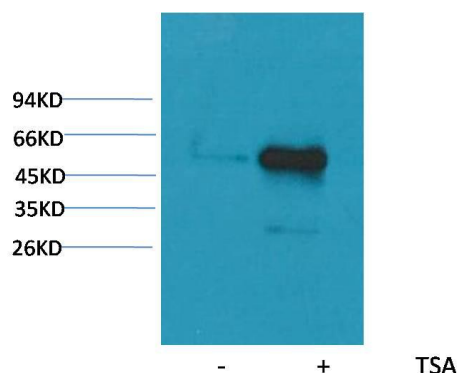
Recommended Dilution

WB	1:1,000-2,000
IHC	1:100-200

Preparation & Storage

Storage	Store at -20°C. Stable for one year from the date of shipment.
Shipping	Bule Ice

Experimental Data



Western blot analysis of extracts from HeLa cells, untreated (-) or treated with TSA (1 μ M, 18 hr; +), using Acetyl- α -tubulin(Lys40) Mouse mAb 1:2000.

Immunohistochemical analysis of paraffin-embedded Human Breast Carcinoma using α -tubulin(Acetyl Lys40) Mouse mAb diluted at 1:200.

Background

Tubulin is one of several members of a small family of globular proteins. The tubulin superfamily includes five distinct families, the α -, β -, γ -, δ -, and ϵ -tubulins. The most common members of the tubulin family are α -tubulin and β -tubulin, the proteins that make up microtubules. Each has a molecular weight of approximately 55 KD. Microtubules are assembled from dimers of α - and β -tubulin.