

β II tubulin Mouse Monoclonal Antibody(Mix-mA™)
(Rodent Preferred)
Catalog No.: RCA10

Basic Information

Information

Reactivity	M,R,(H)
Immunogen	Synthetic Peptide
Host	Mouse
Isotype	IgG1
Storage Buffer & Condition	1mg/ml in PBS, pH 7.4, containing 0.02% sodium azide and 50% glycerol.
Observed MW	50KD

Applications

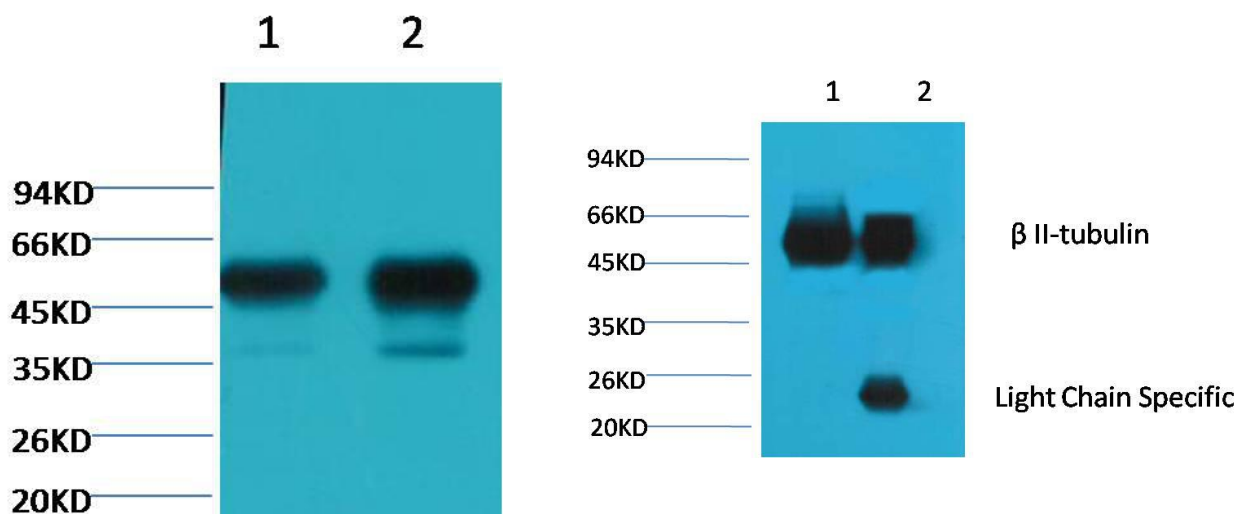
Recommended Dilution

WB	1:50,000-100,000
IP	1:200

Preparation & Storage

Storage	Store at -20°C. Stable for one year from the date of shipment.
Shipping	Bule Ice

Experimental Data



Western blot analysis of 1) Mouse Brain tissue, 2) Rat Brain tissue with β II tubulin Mouse Monoclonal Antibody diluted at 1:100,000.

1. Input: Mouse Brain Tissue Lysate

2. IP product: IP dilute 1:200

Western blot analysis: primary antibody : β II tubulin Mouse Monoclonal Antibody 1:10,000
Secondary antibody: Goat anti-Mouse IgG, Light chain specific (S003), 1:5,000

Background

Tubulin is the major constituent of microtubules. It exists as a heterodimer consisting of an alpha and a beta subunit. Class II beta tubulin is the major form of tubulin beta in neurons, although it is not neuronal specific. It is found in many other tissues including lung tissue and Schwann cells.