

# SPHK2 Rabbit Polyclonal Antibody

Catalog No.: RA20345

## Basic Information

### Information

Reactivity	H,M,R
Immunogen	Recombinant Protein
Host	Rabbit
Isotype	IgG
Storage Buffer & Condition	1mg/ml in PBS, pH 7.4, containing 0.02% sodium azide and 50% glycerol.
Observed MW	70KD

### Applications

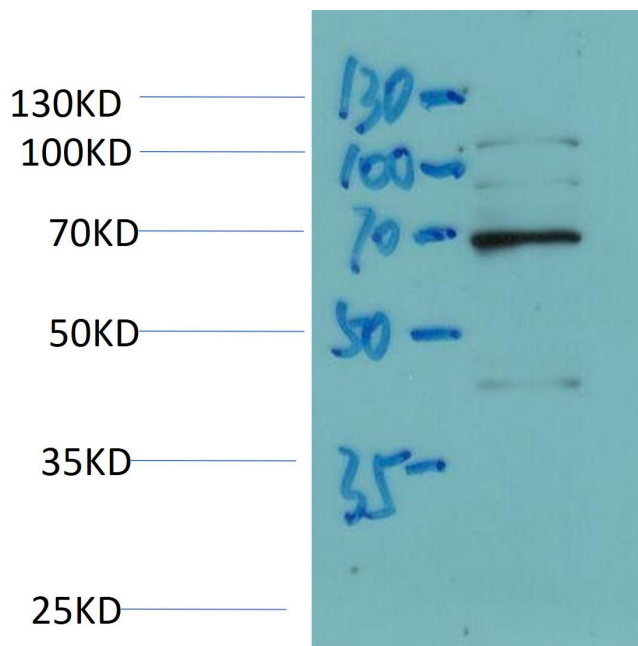
### Recommended Dilution

WB	1:1,000-2,000
----	---------------

## Preparation & Storage

Storage	Store at -20°C. Stable for one year from the date of shipment.
Shipping	Bule Ice

## Experimental Data



Western blot analysis of Mouse Brain Tissue Lysate using SPHK2 Rabbit Polyclonal Antibody diluted at 1:2,000.

## Background

sphingosine kinase 2 (SPHK2) Homo sapiens This gene encodes one of two sphingosine kinase isozymes that catalyze the phosphorylation of sphingosine into sphingosine 1-phosphate. Sphingosine 1-phosphate mediates many cellular processes including migration, proliferation and apoptosis, and also plays a role in several types of cancer by promoting angiogenesis and tumorigenesis.