

# STIP1/HOP Rabbit Polyclonal Antibody

Catalog No.: RA20343

## Basic Information

### Information

Reactivity	H,M,R
Immunogen	Recombinant Protein
Host	Rabbit
Isotype	IgG
Storage Buffer & Condition	1mg/ml in PBS, pH 7.4, containing 0.02% sodium azide and 50% glycerol.
Observed MW	~64KD

### Applications

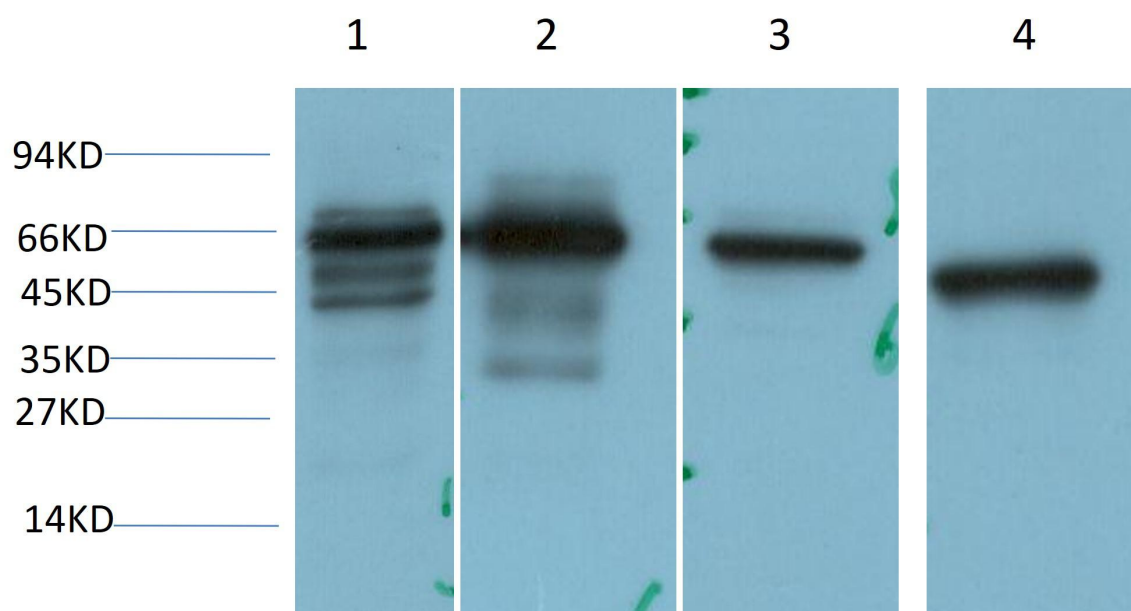
### Recommended Dilution

WB	1:2,000-5,000
----	---------------

## Preparation & Storage

Storage	Store at -20°C. Stable for one year from the date of shipment.
Shipping	Bule Ice

## Experimental Data



Western blot analysis of 1)Hela Cell, 2)293T Cell, 3)Mouse Brain Tissue, 4)Rat Brain Tissue Lysate using STIP1/HOP Rabbit polyclonal Antibody diluted at 1:2,000.

## Background

Stress induced phosphoprotein 1(STIP1) Homo sapiens STIP1 is an adaptor protein that coordinates the functions of HSP70 (see HSPA1A; MIM 140550) and HSP90 (see HSP90AA1; MIM 140571) in protein folding. It is thought to assist in the transfer of proteins from HSP70 to HSP90 by binding both HSP90 and substrate-bound HSP70. STIP1 also stimulates the ATPase activity of HSP70 and inhibits the ATPase activity of HSP90, suggesting that it regulates both the conformations and ATPase cycles of these chaperones.