

# SGT1/ECD Rabbit Polyclonal Antibody

Catalog No.: RA20342

## Basic Information

### Information

Reactivity	H,M,R
Immunogen	Recombinant Protein
Host	Rabbit
Isotype	IgG
Storage Buffer & Condition	1mg/ml in PBS, pH 7.4, containing 0.02% sodium azide and 50% glycerol.
Observed MW	~73KD

### Applications

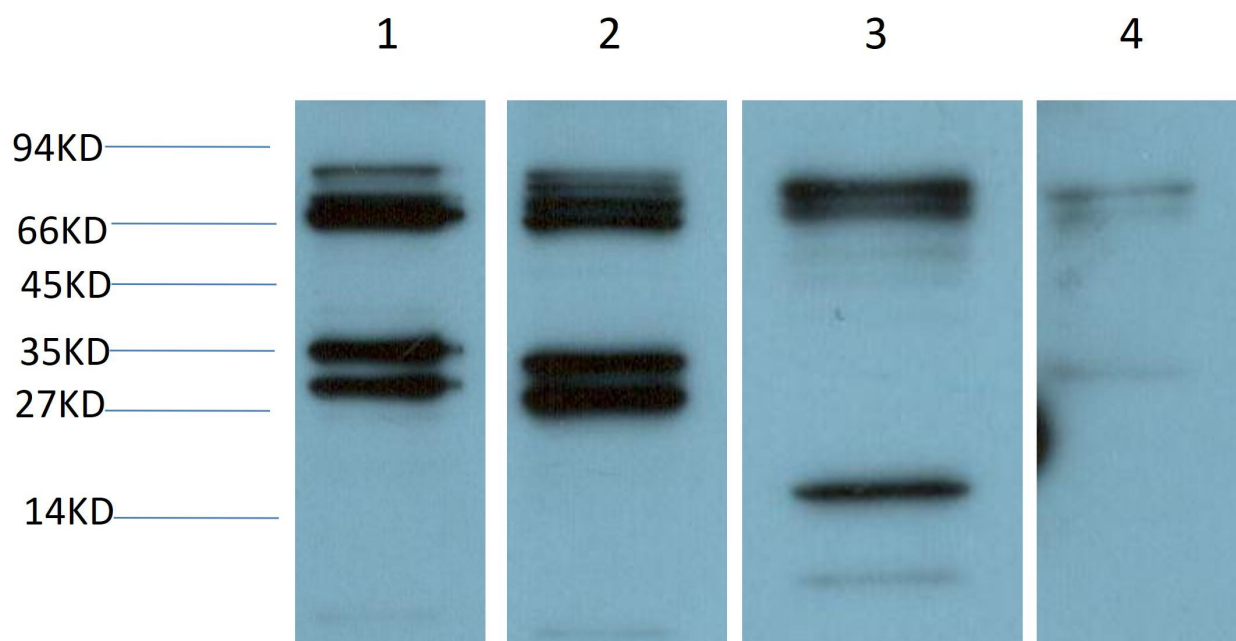
### Recommended Dilution

WB	1:2,000-5,000
----	---------------

## Preparation & Storage

Storage	Store at -20°C. Stable for one year from the date of shipment.
Shipping	Bule Ice

## Experimental Data



Western blot analysis of 1)Hela Cell, 2)293T Cell, 3)Mouse Brain Tissue, 4)Rat Brain Tissue Lysate using SGT1/ECD Rabbit polyclonal Antibody diluted at 1:2,000.