

# Glucocorticoid receptor Rabbit Polyclonal Antibody

## Catalog No.: RA20326

### Basic Information

#### Information

Reactivity	H,M,R
Immunogen	Recombinant Protein
Host	Rabbit
Isotype	IgG
Storage Buffer & Condition	1mg/ml in PBS, pH 7.4, containing 0.02% sodium azide and 50% glycerol.
Observed MW	80-97KD

#### Applications

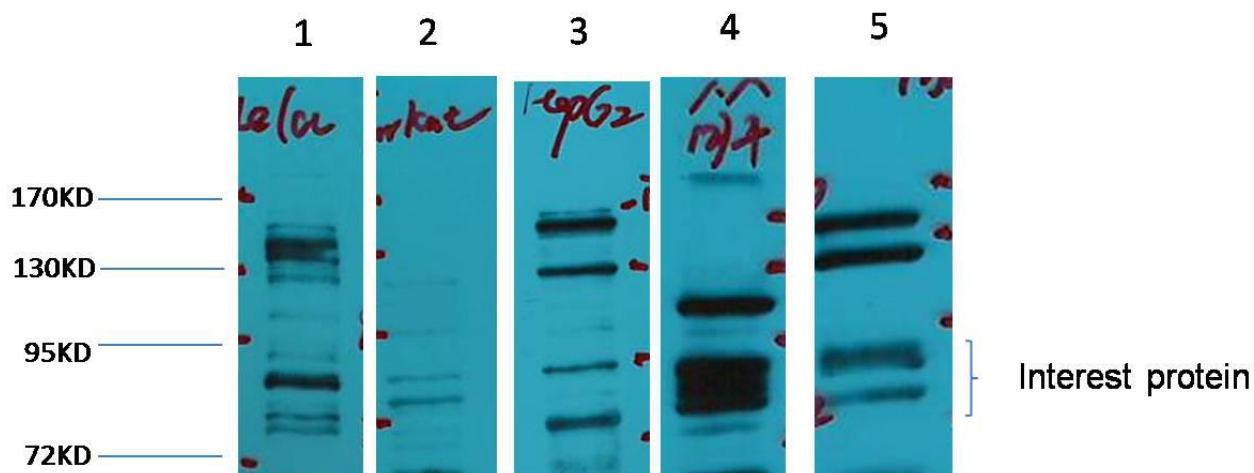
#### Recommended Dilution

WB	1:1,000-3,000
----	---------------

#### Preparation & Storage

Storage	Store at -20°C. Stable for one year from the date of shipment.
Shipping	Bule Ice

## Experimental Data



Western blot analysis of 1)Hela, 2)Jurkat,3)HepG2, 4)Mouse Liver tissue , 5)Rat Brain tissue, with GR Rabbit pAb diluted at 1:2,000.

## Background

The glucocorticoid receptor (GR or GCR).The GR is expressed in almost every cell in the body and regulates genes controlling the development,metabolism,and immune response. Because the receptor gene is expressed in several forms,it has many different (pleiotropic) effects in different parts of the body.