

alpha-Syneuclein Rabbit Polyclonal Antibody**Catalog No.: RA20319****Basic Information****Information**

Reactivity	H,M,R
Immunogen	Synthetic Peptide
Host	Rabbit
Isotype	IgG1
Storage Buffer & Condition	1mg/ml in PBS, pH 7.4, containing 0.02% sodium azide and 50% glycerol.
Observed MW	14KD

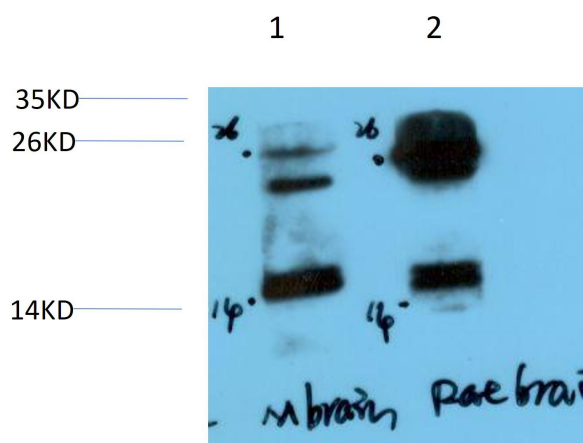
Applications**Recommended Dilution**

WB	1:500-2,000
IHC	1:100-200

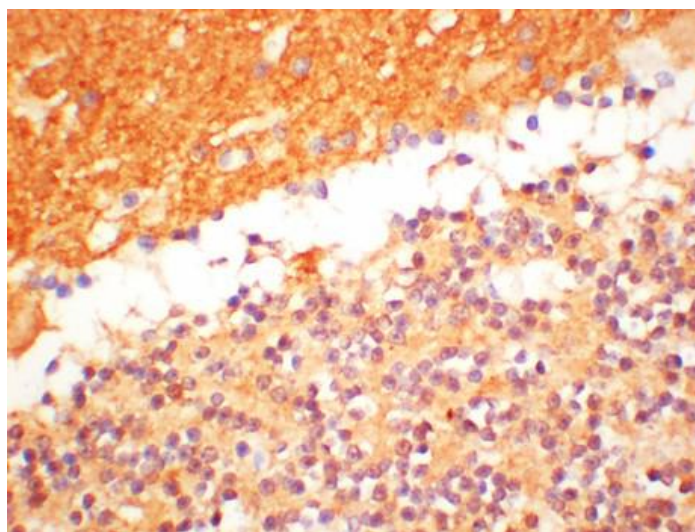
Preparation & Storage

Storage	Store at -20°C. Stable for one year from the date of shipment.
Shipping	Bule Ice

Experimental Data



Western blot analysis of 1) Mouse Brain Tissue, 2) Rat Brain Tissue Lysate using alpha-Syneuclein Rabbit Polyclonal Antibody diluted at 1:2,000.



Immunohistochemical analysis of paraffin-embedded Mouse Brain Tissue using alpha-Syneuclein Rabbit Polyclonal antibody diluted at 1:200.

Background

Genetic alterations of SNCA resulting in aberrant polymerization into fibrils, are associated with several neurodegenerative diseases (synucleinopathies). SNCA fibrillar aggregates represent the major non A-beta component of Alzheimer disease amyloid plaque, and a major component of Lewy body inclusions.