

# AMH Rabbit Polyclonal Antibody

Catalog No.: RA20318

## Basic Information

### Information

Reactivity	H
Immunogen	Synthetic Peptide
Host	Rabbit
Isotype	IgG
Storage Buffer & Condition	1mg/ml in PBS, pH 7.4, containing 0.02% sodium azide and 50% glycerol.
Observed MW	61KD

### Applications

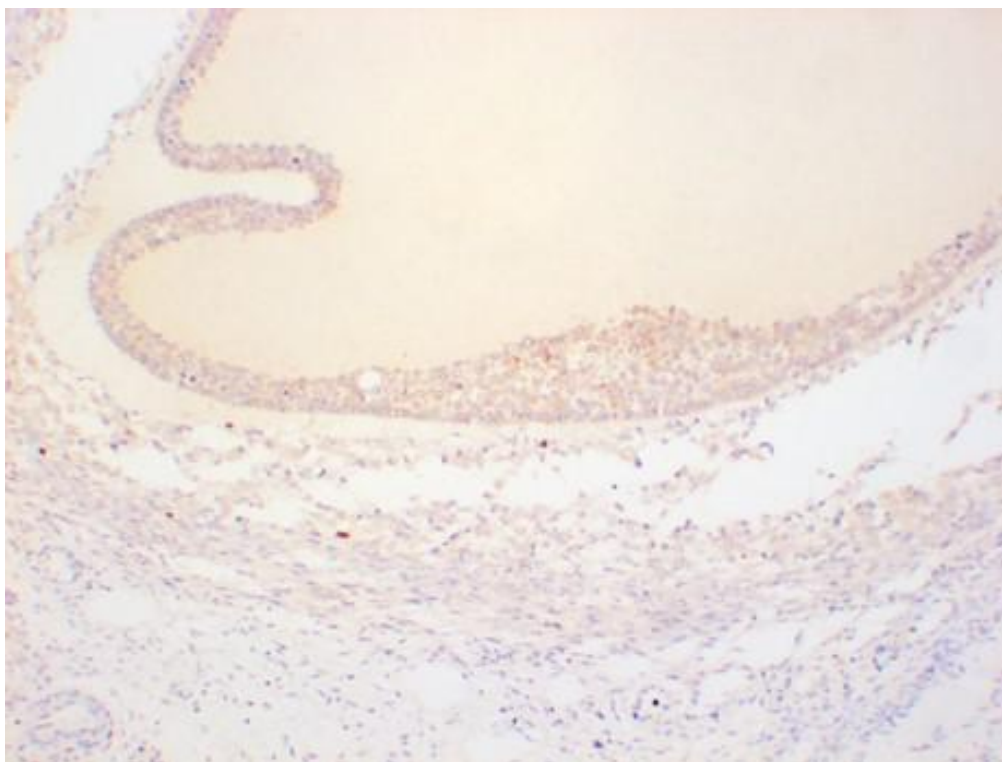
### Recommended Dilution

IHC	1:100-200
-----	-----------

## Preparation & Storage

Storage	Store at -20°C. Stable for one year from the date of shipment.
Shipping	Bule Ice

## Experimental Data



Immunohistochemical analysis of paraffin-embedded Human Ovarian Tissue using AMH Rabbit Polyclonal antibody diluted at 1:200.

## Background

anti-Mullerian hormone (AMH) Homo sapiens This gene encodes a secreted ligand of the TGF-beta (transforming growth factor-beta) superfamily of proteins. Ligands of this family bind various TGF-beta receptors leading to recruitment and activation of SMAD family transcription factors that regulate gene expression.