

NBR1 Rabbit Polyclonal Antibody (F317)

Catalog No.: RA20302

Basic Information

Information

Reactivity	H,M,R
Immunogen	Recombinant Protein
Host	Rabbit
Isotype	IgG
Storage Buffer & Condition	1mg/ml in PBS, pH 7.4, containing 0.02% sodium azide and 50% glycerol.
Observed MW	120KD

Applications

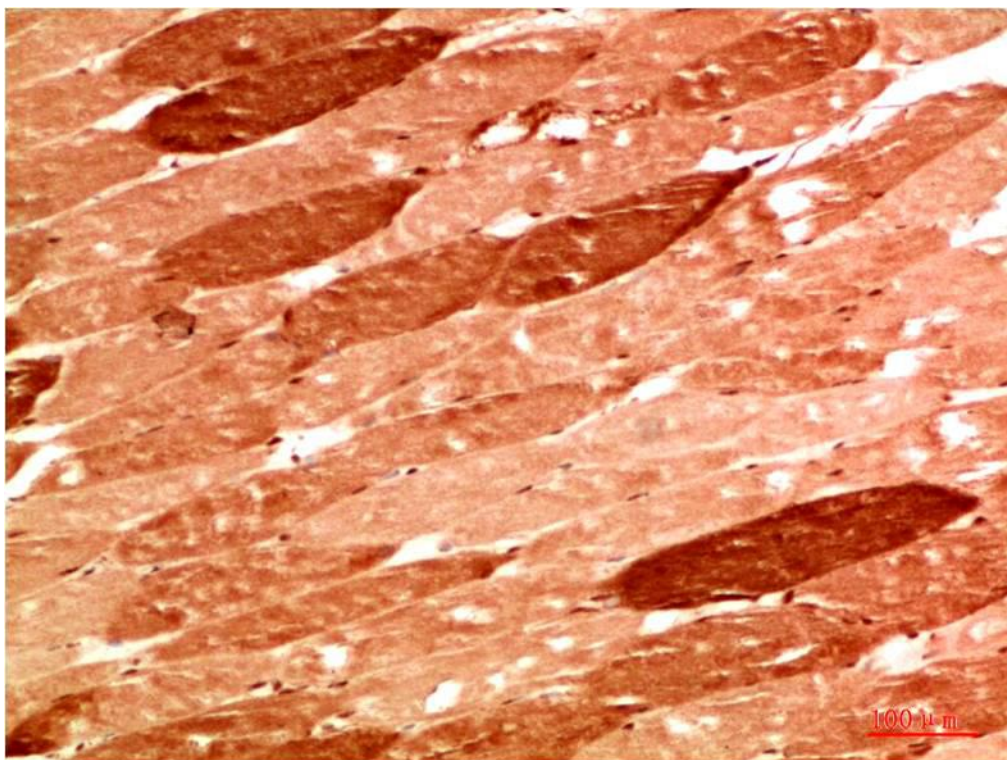
Recommended Dilution

IHC	1:200-500
-----	-----------

Preparation & Storage

Storage	Store at -20°C. Stable for one year from the date of shipment.
Shipping	Bule Ice

Experimental Data



Immunohistochemical analysis of paraffin-embedded Human Skeletal Muscle Tissue using NBR1 Rabbit pAb diluted at 1:500.

Background

NBR1 protein is known for its encoding gene proximity to the BRCA1 tumor suppressor gene. N-terminal Phox and Bem1p (PB1) domains of NBR1 mediate its interaction with muscle specific titin kinase and scaffolding protein p62. NBR1 plays a role in autophagy by facilitating the autophagosomal degradation of ubiquitinated proteins independently and also in concert with p62.