

c-Abl Rabbit Polyclonal Antibody (F314)**Catalog No.: RA20301****Basic Information****Information**

| | |
|---------------------------------------|--|
| Reactivity | H,M,R |
| Immunogen | Recombinant Protein |
| Host | Rabbit |
| Isotype | IgG |
| Storage Buffer & Condition | 1mg/ml in PBS, pH 7.4, containing 0.02% sodium azide and 50% glycerol. |
| Observed MW | 120KD |

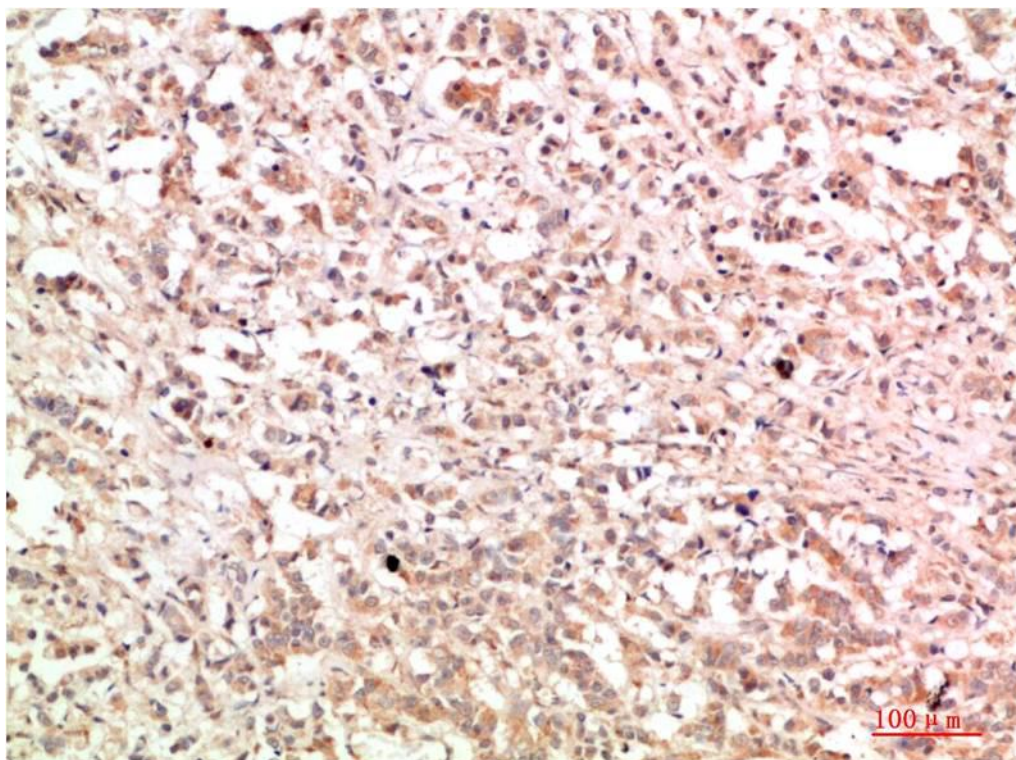
Applications**Recommended Dilution**

| | |
|------------|-----------|
| IHC | 1:100-200 |
|------------|-----------|

Preparation & Storage

| | |
|-----------------|--|
| Storage | Store at -20°C. Stable for one year from the date of shipment. |
| Shipping | Bule Ice |

Experimental Data



Immunohistochemical analysis of paraffin-embedded Human Breast Carcinoma Tissue using c-Abl Rabbit pAb diluted at 1:200.

Background

c-Abl protein is distributed in both the nucleus and the cytoplasm of cells. It is implicated in regulating cell proliferation, apoptosis, differentiation, cell adhesion, and stress responses.