

# ATG13 Rabbit Polyclonal Antibody (F310)

Catalog No.: RA20298

## Basic Information

### Information

Reactivity	H,M,R
Immunogen	Recombinant Protein
Host	Rabbit
Isotype	IgG
Storage Buffer & Condition	1mg/ml in PBS, pH 7.4, containing 0.02% sodium azide and 50% glycerol.
Observed MW	57KD

### Applications

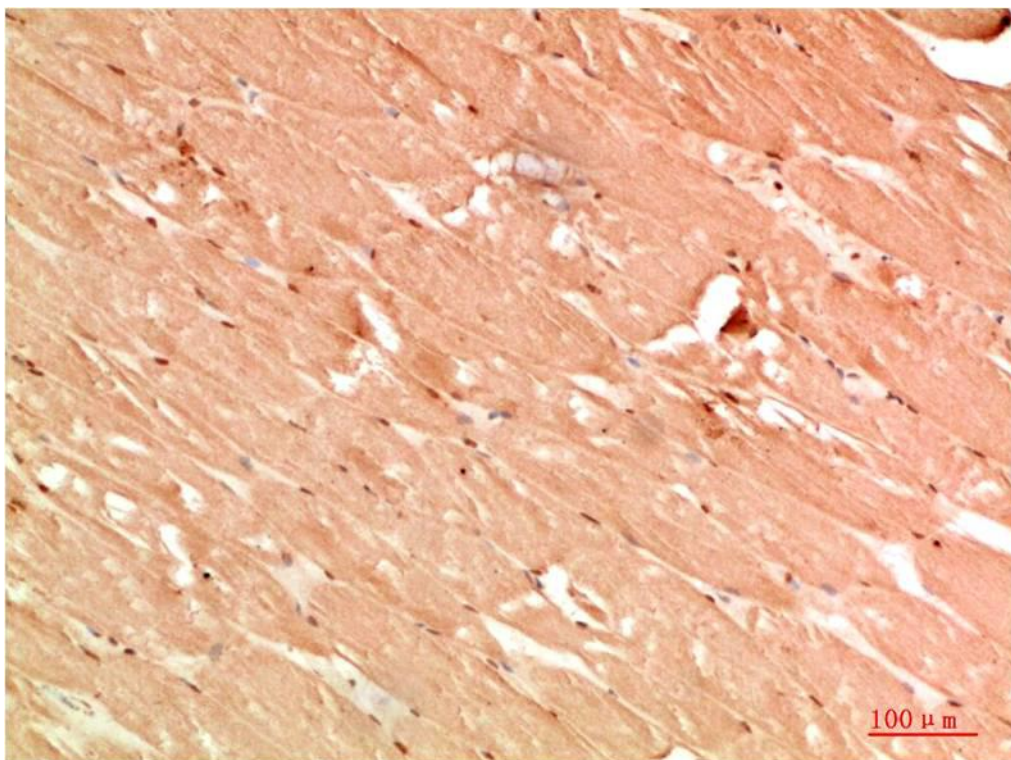
### Recommended Dilution

IHC	1:100-200
-----	-----------

## Preparation & Storage

Storage	Store at -20°C. Stable for one year from the date of shipment.
Shipping	Bule Ice

## Experimental Data



Immunohistochemical analysis of paraffin-embedded Human Skeletal Muscle Tissue using ATG13 Rabbit pAb diluted at 1:200.

## Background

Atg13 was identified as a constitutively expressed protein that was genetically linked to Atg1/Apg1, a protein kinase required for autophagy. Overexpression of Atg1 suppresses the defects in autophagy observed in Atg13 mutants. Autophagy requires a direct association between Atg1 and Atg13, and is inhibited by TOR-dependent phosphorylation of Atg13 under high-nutrient conditions.