

ATG5 Rabbit Polyclonal Antibody (F307)

Catalog No.: RA20296

Basic Information

Information

Reactivity	H,M,R
Immunogen	Recombinant Protein
Host	Rabbit
Isotype	IgG
Storage Buffer & Condition	1mg/ml in PBS, pH 7.4, containing 0.02% sodium azide and 50% glycerol.
Observed MW	32KD

Applications

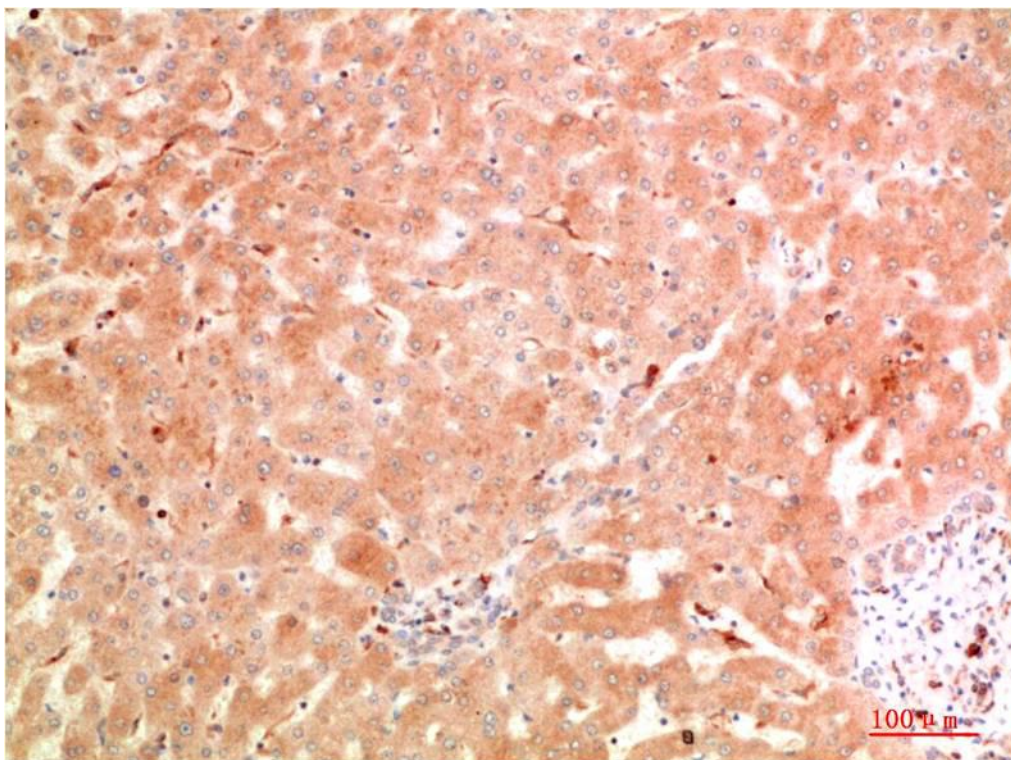
Recommended Dilution

IHC	1:100-200
-----	-----------

Preparation & Storage

Storage	Store at -20°C. Stable for one year from the date of shipment.
Shipping	Bule Ice

Experimental Data



Immunohistochemical analysis of paraffin-embedded Human Hepatocarcinoma Tissue using ATG5 Rabbit pAb diluted at 1:200

Background

Autophagy is generally activated by conditions of nutrient deprivation but has also been associated with a number of physiological processes including development, differentiation, neurodegeneration, infection, and cancer. Formation of the autophagosome involves a ubiquitin-like conjugation system in which Atg12 is covalently bound to Atg5 and targeted to autophagosome vesicles. This conjugation reaction is mediated by the ubiquitin E1-like enzyme Atg7 and the E2-like enzyme Atg10.