

I κ B α Rabbit Polyclonal Antibody(F168)

Catalog No.: RA20285

Basic Information

Information

Reactivity	H,M,R
Immunogen	Recombinant Protein
Host	Rabbit
Isotype	IgG
Storage Buffer & Condition	1mg/ml in PBS, pH 7.4, containing 0.02% sodium azide and 50% glycerol.
Observed MW	40KD

Applications

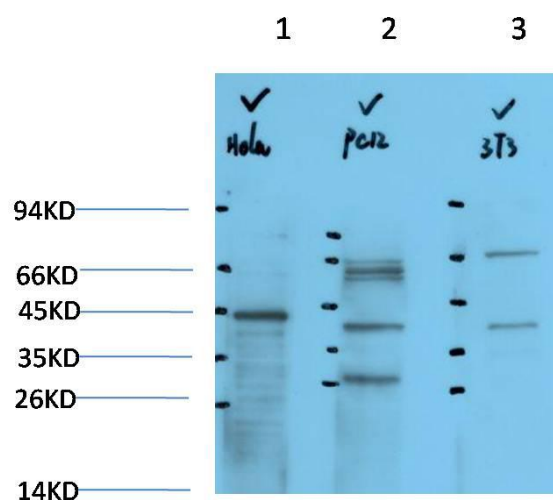
Recommended Dilution

WB	1:500-1,000
IHC	1:100-200

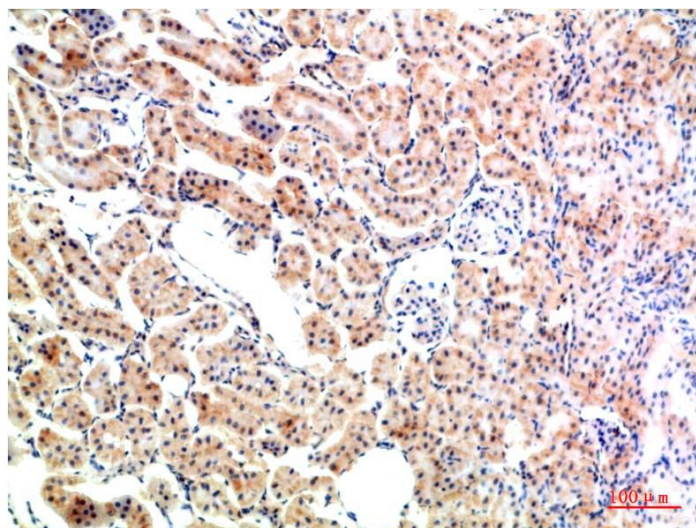
Preparation & Storage

Storage	Store at -20°C. Stable for one year from the date of shipment.
Shipping	Bule Ice

Experimental Data



Western blot analysis of 1)Hela Cell Lysate, 2)PC12 Cell Lysate, 3)3T3 Cell Lysate using IkB α Rabbit pAb diluted at 1:1000.



Immunohistochemical analysis of paraffin-embedded Rat Kidney Tissue using IkB α Rabbit pAb diluted at 1:200.

Background

Inhibits the activity of dimeric NF-kappa-B/REL complexes by trapping REL dimers in the cytoplasm through masking of their nuclear localization signals. IkB α phosphorylation and resulting Rel-dependent transcription are activated by a highly diverse group of extracellular signals including inflammatory cytokines, growth factors, and chemokines.