

HP-1 β Rabbit Polyclonal Antibody (HP-1 b)

Catalog No.: RA20279

Basic Information

Information

| | |
|----------------------------|--|
| Reactivity | H,M,R |
| Immunogen | Recombinant Protein |
| Host | Rabbit |
| Isotype | IgG |
| Storage Buffer & Condition | 1mg/ml in PBS, pH 7.4, containing 0.02% sodium azide and 50% glycerol. |
| Observed MW | 25KD |

Applications

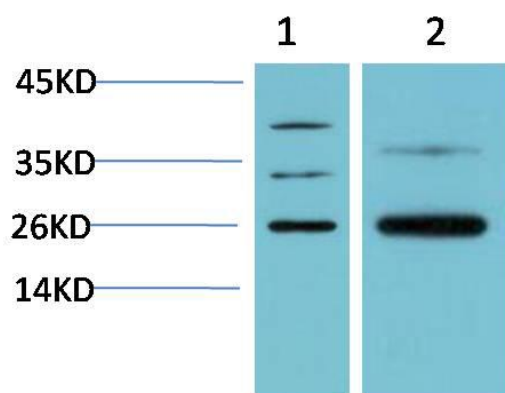
Recommended Dilution

| | |
|-----|---------------|
| WB | 1:1,000-5,000 |
| IHC | 1:200-500 |

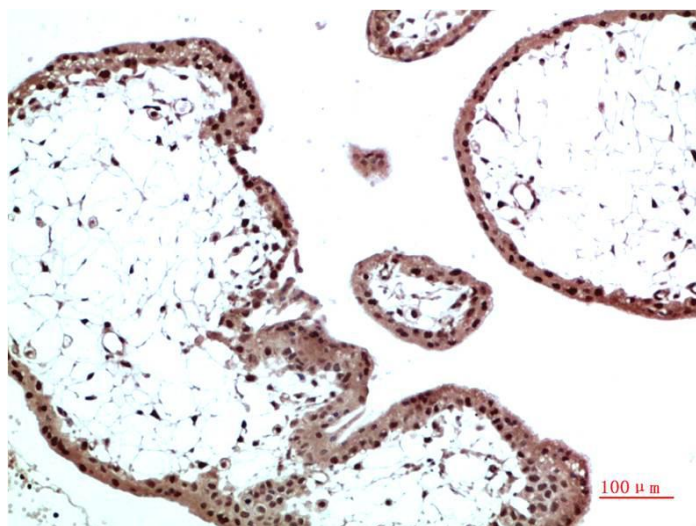
Preparation & Storage

| | |
|----------|--|
| Storage | Store at -20°C. Stable for one year from the date of shipment. |
| Shipping | Bule Ice |

Experimental Data



Western blot analysis of 1)Hela Cell Lysate, 2)Rat Brain Tissue Lysate using HP-1 β /CBX1 Rabbit pAb diluted at 1:5000.



Immunohistochemical analysis of paraffin-embedded Human Placenta Tissue using HP-1 β /CBX1 Rabbit pAb diluted at 1:500

Background

Heterochromatin protein 1 (HP1) is a family of heterochromatic adaptor molecules involved in both gene silencing and higher order chromatin structure. All three HP1 family members (α , β , and γ) are primarily associated with centromeric heterochromatin.