

## HP-1 $\alpha$ Rabbit Polyclonal Antibody(HP-1 a)

Catalog No.: RA20278

### Basic Information

#### Information

Reactivity	H,M,R
Immunogen	Recombinant Protein
Host	Rabbit
Isotype	IgG
Storage Buffer & Condition	1mg/ml in PBS, pH 7.4, containing 0.02% sodium azide and 50% glycerol.
Observed MW	22KD

#### Applications

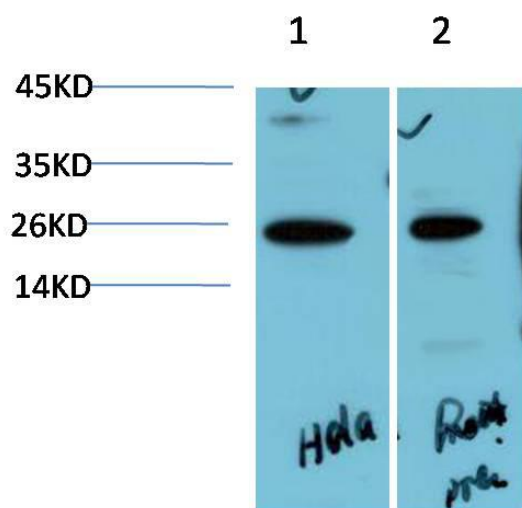
#### Recommended Dilution

WB	1:1,000-2,000
IHC	1:200-500

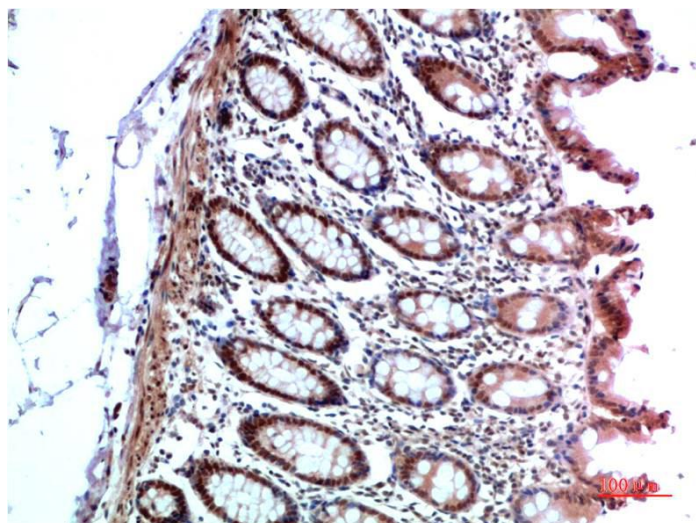
#### Preparation & Storage

Storage	Store at -20°C. Stable for one year from the date of shipment.
Shipping	Bule Ice

## Experimental Data



Western blot analysis of 1)Hela Cell Lysate, 2)Rat Brain Tissue Lysate using HP-1 $\alpha$  Rabbit pAb diluted at 1:2000.



Immunohistochemical analysis of paraffin-embedded Human Colon Carcinoma Tissue using HP-1 $\alpha$  Rabbit pAb diluted at 1:500.

## Background

Heterochromatin protein 1 (HP1) is a family of heterochromatic adaptor molecules involved in both gene silencing and higher order chromatin structure. All three HP1 family members ( $\alpha$ ,  $\beta$ , and  $\gamma$ ) are primarily associated with centromeric heterochromatin.