

# MAPK(ERK1 2) Rabbit Polyclonal Antibody(F135)

Catalog No.: RA20276

## Basic Information

### Information

Reactivity	H,M,R
Immunogen	Recombinant Protein
Host	Rabbit
Isotype	IgG
Storage Buffer & Condition	1mg/ml in PBS, pH 7.4, containing 0.02% sodium azide and 50% glycerol.
Observed MW	44,42KD

### Applications

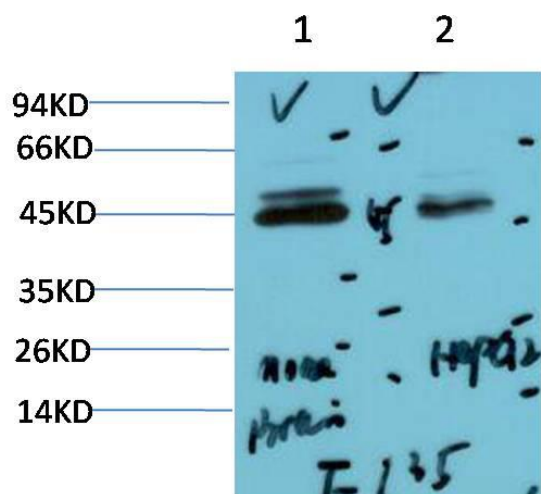
### Recommended Dilution

WB	1:1,000-2,000
IHC	1:50-100

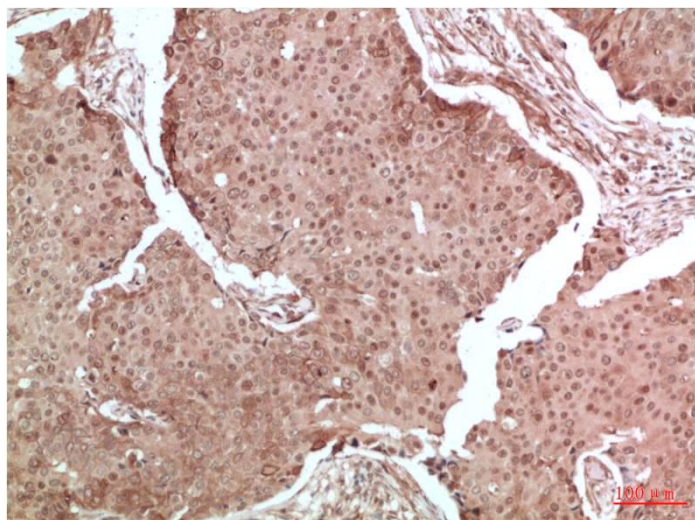
## Preparation & Storage

Storage	Store at -20°C. Stable for one year from the date of shipment.
Shipping	Bule Ice

## Experimental Data



Western blot analysis of 1) Mouse Brain Tissue Lysate, 2) HepG2 Cell Lysate using ERK1/2 Rabbit pAb diluted at 1:2000.



Immunohistochemical analysis of paraffin-embedded Human Breast Carcinoma Tissue using ERK1/2 Rabbit pAb diluted at 1:100

## Background

Mitogen-activated protein kinases (MAPKs) are a widely conserved family of serine/threonine protein kinases involved in many cellular programs such as cell proliferation, differentiation, motility, and death. The p44/42 MAPK (Erk1/2) signaling pathway can be activated in response to a diverse range of extracellular stimuli including mitogens, growth factors, and cytokines and is an important target in the diagnosis and treatment of cancer.