

NM23A Rabbit Polyclonal Antibody(NM23)

Catalog No.: RA20268

Basic Information

Information

Reactivity	H,M,R
Immunogen	Recombinant Protein
Host	Rabbit
Isotype	IgG
Storage Buffer & Condition	1mg/ml in PBS, pH 7.4, containing 0.02% sodium azide and 50% glycerol.
Observed MW	17KD

Applications

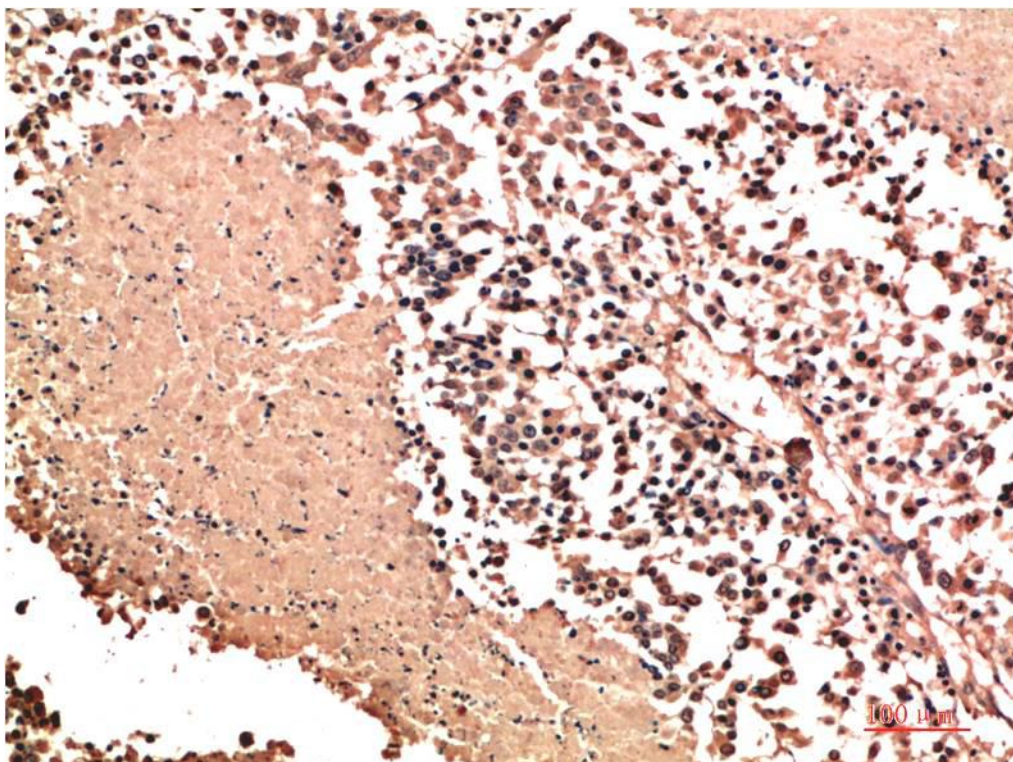
Recommended Dilution

IHC	1:200-500
-----	-----------

Preparation & Storage

Storage	Store at -20°C. Stable for one year from the date of shipment.
Shipping	Bule Ice

Experimental Data



Immunohistochemical analysis of paraffin-embedded Human Lung Carcinoma Tissue using NM23A Rabbit pAb diluted at 1:500.

Background

Members of the NDK/NME/NM23 kinase family inhibit metastasis in a variety of tumor cell types. All NDK/NME/NM23 proteins possess nucleoside diphosphatase kinase (NDK) activity and catalyze the phosphorylation of nucleoside diphosphate to the corresponding nucleoside triphosphate to regulate a diverse array of cellular events.