

KV10.2 Rabbit Polyclonal Antibody(A260)

Catalog No.: RA20255

Basic Information

Information

Reactivity	H,M,R
Immunogen	Synthetic Peptide
Host	Rabbit
Isotype	IgG
Storage Buffer & Condition	1mg/ml in PBS, pH 7.4, containing 0.02% sodium azide and 50% glycerol.
Observed MW	60KD

Applications

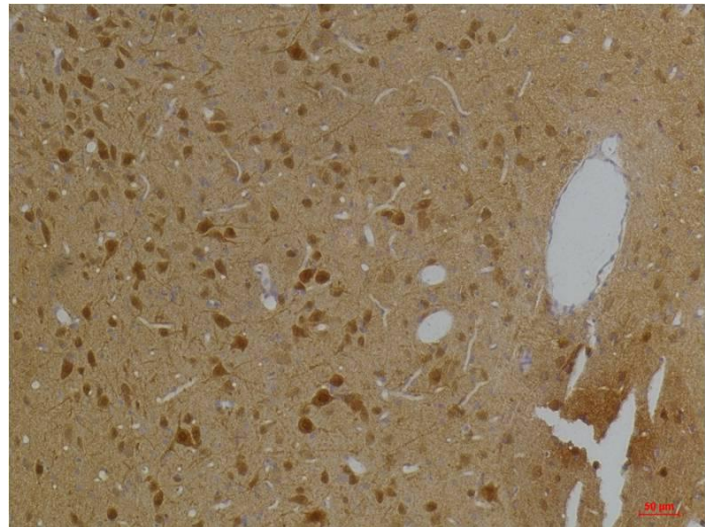
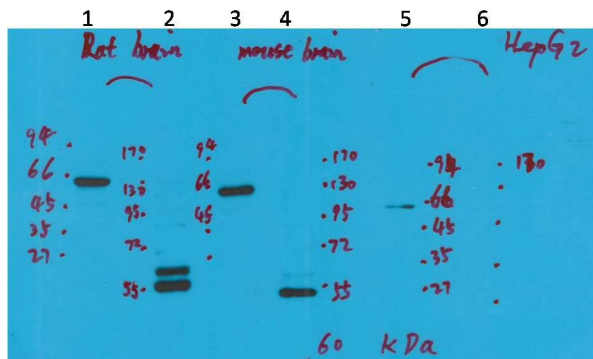
Recommended Dilution

WB	1:1,000-2,000
IHC	1:100-200

Preparation & Storage

Storage	Store at -20°C. Stable for one year from the date of shipment.
Shipping	Bule Ice

Experimental Data



Western blot analysis of 1)Rat Brain Tissue-Low Molecular Protein Marker, 2)Rat Brain Tissue-High Molecular Protein Marker, 3)Mouse Brain Tissue-Low Molecular Protein Marker, 4)Mouse Brain Tissue- High Molecular Protein Marker, 5)HepG2-Low Molecular Prote

Immunohistochemical analysis of paraffin-embedded Rat BrainTissue using Kv10.2 Rabbit pAb diluted at 1:200.

Background

N/A