

KCNN2(SK2) Rabbit Polyclonal Antibody(A244)

Catalog No.: RA20243

Basic Information

Information

Reactivity	H,M,R
Immunogen	Synthetic Peptide
Host	Rabbit
Isotype	IgG
Storage Buffer & Condition	1mg/ml in PBS, pH 7.4, containing 0.02% sodium azide and 50% glycerol.
Observed MW	70,26KD

Applications

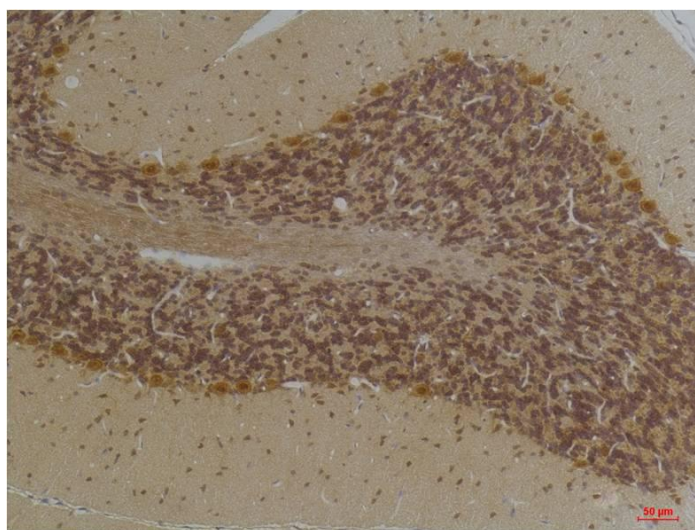
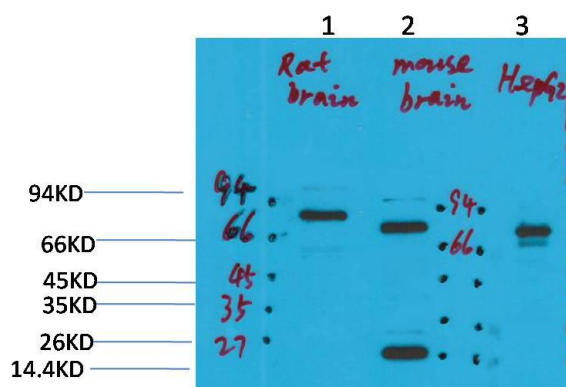
Recommended Dilution

WB	1:1,000-2,000
IHC	1:100-200

Preparation & Storage

Storage	Store at -20°C. Stable for one year from the date of shipment.
Shipping	Bule Ice

Experimental Data



Western blot analysis of 1)Rat BrainTissue, 2)Mouse Brain Tissue, 3)HepG2 with KCNN2(SK2)Rabbit pAb diluted at 1:2,000.

Immunohistochemical analysis of paraffin-embedded Human BrainTissue using KCNN2(SK2)Rabbit pAb diluted at 1:200.

Background

Forms a voltage-independent potassium channel activated by intracellular calcium. Activation is followed by membrane hyperpolarization.