

Kv1.1 potassium channel Rabbit Polyclonal Antibody(A243)

Catalog No.: RA20242

Basic Information

Information

Reactivity	H,M,R
Immunogen	Synthetic Peptide
Host	Rabbit
Isotype	IgG
Storage Buffer & Condition	1mg/ml in PBS, pH 7.4, containing 0.02% sodium azide and 50% glycerol.
Observed MW	56KD

Applications

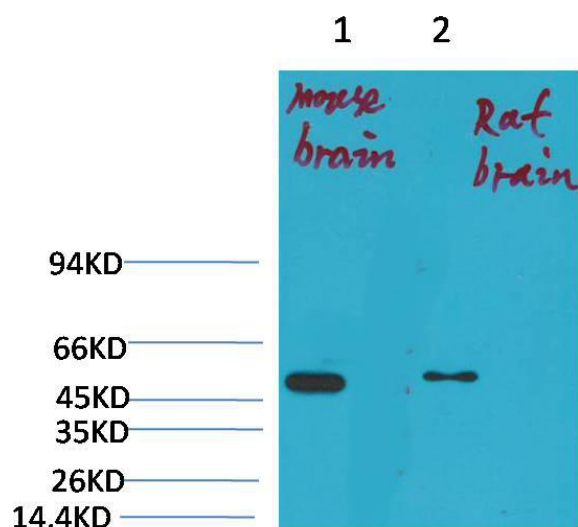
Recommended Dilution

WB	1:1,000-2,000
IHC	1:100-200

Preparation & Storage

Storage	Store at -20°C. Stable for one year from the date of shipment.
Shipping	Bule Ice

Experimental Data



Western blot analysis of 1) Mouse Brain Tissue, 2) Rat Brain Tissue with KV1.1 potassium channel Rabbit pAb diluted at 1:2,000.



Immunohistochemical analysis of paraffin-embedded Mouse Brain Tissue using KV1.1 Potassium Channel Rabbit pAb diluted at 1:200.

Background

Mediates the voltage-dependent potassium ion permeability of excitable membranes. Assuming opened or closed conformations in response to the voltage difference across the membrane, the protein forms a potassium-selective channel through which potassium ions may pass in accordance with their electrochemical gradient.