

GLP1R Rabbit Polyclonal Antibody(A233)

Catalog No.: RA20236

Basic Information

Information

| | |
|----------------------------|--|
| Reactivity | H,M,R |
| Immunogen | Synthetic Peptide |
| Host | Rabbit |
| Isotype | IgG |
| Storage Buffer & Condition | 1mg/ml in PBS, pH 7.4, containing 0.02% sodium azide and 50% glycerol. |
| Observed MW | 53KD |

Applications

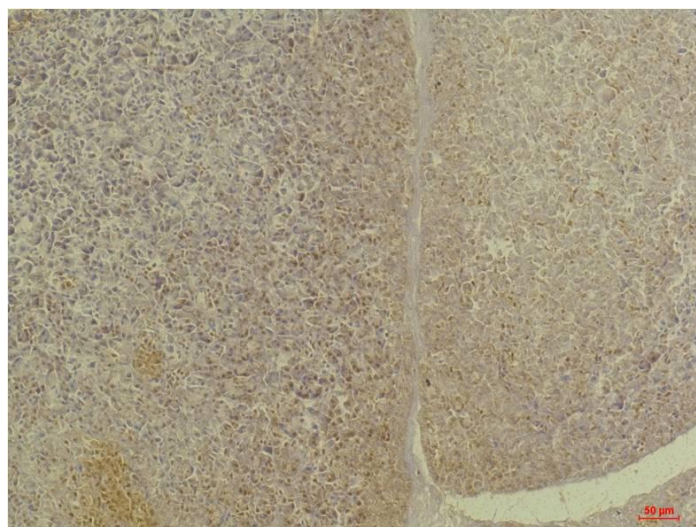
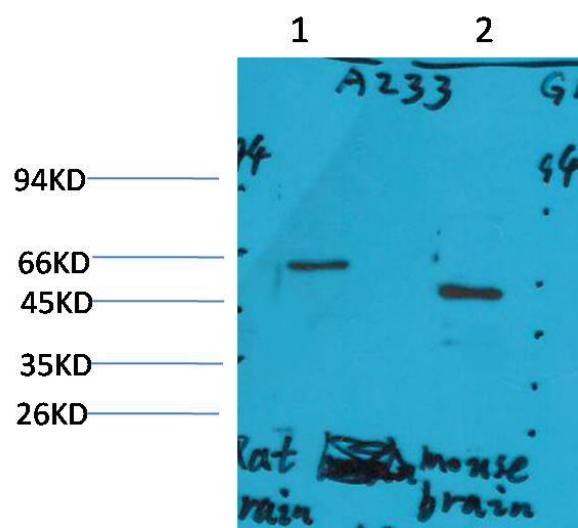
Recommended Dilution

| | |
|-----|---------------|
| WB | 1:1,000-2,000 |
| IHC | 1:100-200 |

Preparation & Storage

| | |
|----------|--|
| Storage | Store at -20°C. Stable for one year from the date of shipment. |
| Shipping | Bule Ice |

Experimental Data



Western blot analysis of 1)Rat BrainTissue, 2)Mouse Brain Tissue with GLP1R Rabbit pAb diluted at 1:2,000.

Immunohistochemical analysis of paraffin-embedded Human Pancreas Tissue using GLP1R Rabbit pAb diluted at 1:200.

Background

The activity of this receptor is mediated by G proteins which activate adenylyl cyclase.