

# Ghrelin Receptor Rabbit Polyclonal Antibody(A232)

Catalog No.: RA20235

## Basic Information

### Information

Reactivity	H,M,R
Immunogen	Synthetic Peptide
Host	Rabbit
Isotype	IgG
Storage Buffer & Condition	1mg/ml in PBS, pH 7.4, containing 0.02% sodium azide and 50% glycerol.
Observed MW	41KD

### Applications

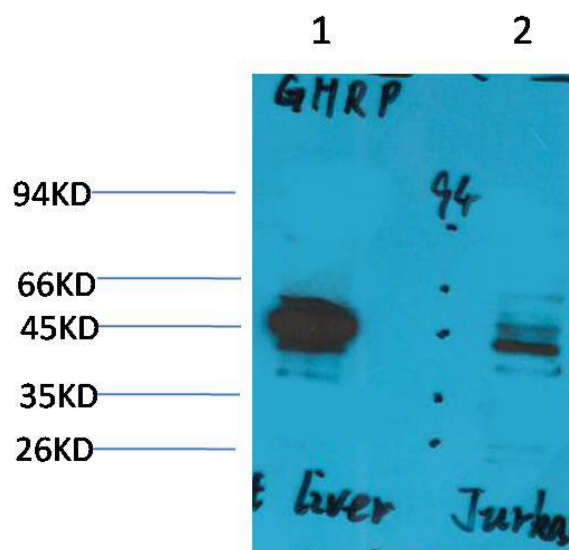
### Recommended Dilution

WB	1:1,000-2,000
IHC	1:100-200

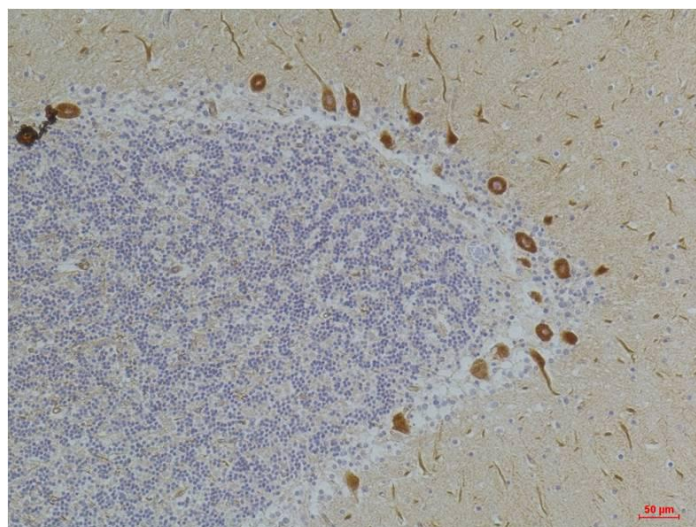
## Preparation & Storage

Storage	Store at -20°C. Stable for one year from the date of shipment.
Shipping	Bule Ice

## Experimental Data



Western blot analysis of 1) Rat Liver Tissue, 2) Jurkat with Ghrelin Receptor Rabbit pAb diluted at 1:2,000.



Immunohistochemical analysis of paraffin-embedded Human Brain Tissue using Ghrelin Receptor Rabbit pAb diluted at 1:200.

## Background

Receptor for ghrelin, coupled to G-alpha-11 proteins. Stimulates growth hormone secretion. Binds also other growth hormone releasing peptides (GHRP).