

GALR2 Rabbit Polyclonal Antibody(A231)

Catalog No.: RA20234

Basic Information

Information

Reactivity	H,M,R
Immunogen	Synthetic Peptide
Host	Rabbit
Isotype	IgG
Storage Buffer & Condition	1mg/ml in PBS, pH 7.4, containing 0.02% sodium azide and 50% glycerol.
Observed MW	42KD

Applications

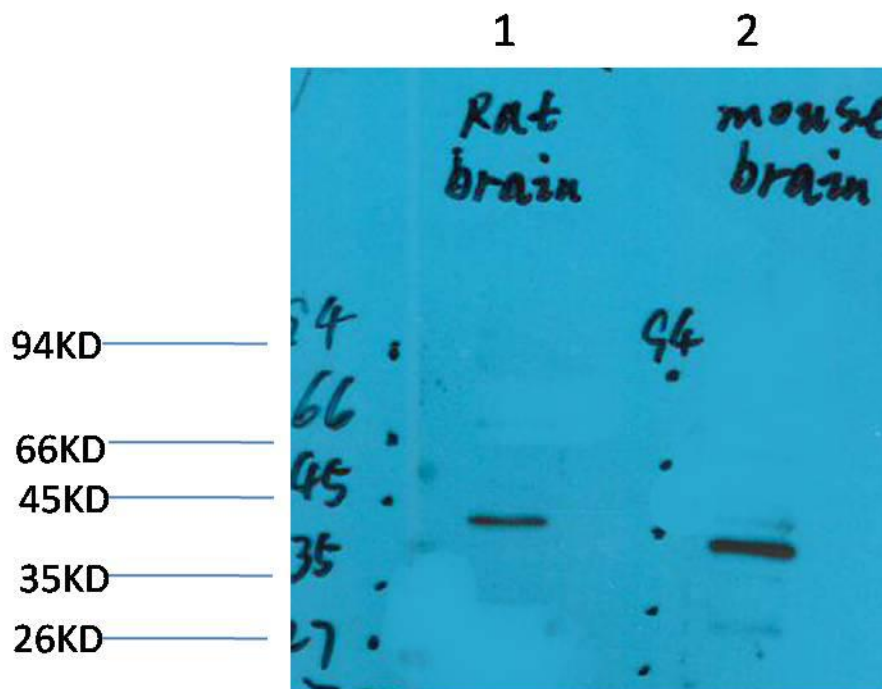
Recommended Dilution

WB	1:1,000-2,000
----	---------------

Preparation & Storage

Storage	Store at -20°C. Stable for one year from the date of shipment.
Shipping	Bule Ice

Experimental Data



Western blot analysis of 1)Rat Brain Tissue, 2)Mouse Brain Tissue with GALR2 Rabbit pAb diluted at 1:2,000.

Background

GALR2 Receptor for the hormone galanin and for GALP. The activity of this receptor is mediated by G proteins that activate the phospholipase C/protein kinase C pathway (via G(q)) and that inhibit adenylyl cyclase (via G(i)).