

Connexin-26 Rabbit Polyclonal Antibody(A219)

Catalog No.: RA20223

Basic Information

Information

Reactivity	H,M
Immunogen	Synthetic Peptide
Host	Rabbit
Isotype	IgG
Storage Buffer & Condition	1mg/ml in PBS, pH 7.4, containing 0.02% sodium azide and 50% glycerol.
Observed MW	26KD

Applications

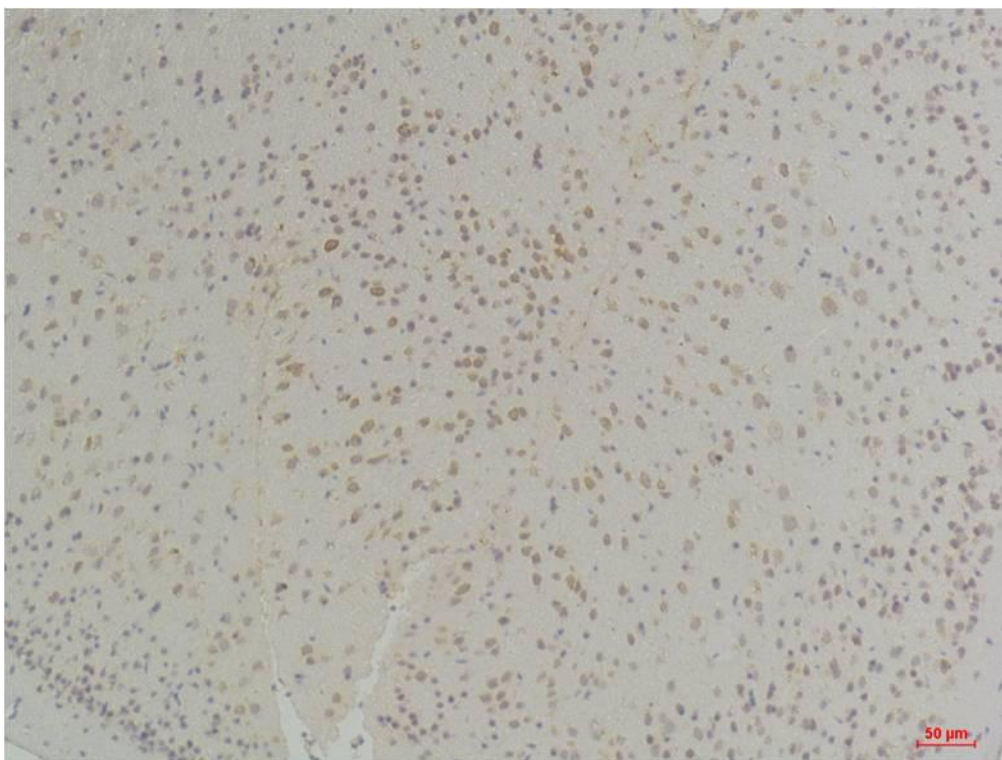
Recommended Dilution

IHC	1:100-200
-----	-----------

Preparation & Storage

Storage	Store at -20°C. Stable for one year from the date of shipment.
Shipping	Bule Ice

Experimental Data



Immunohistochemical analysis of paraffin-embedded Mouse Brain Tissue using Connexin-26 Rabbit pAb diluted at 1:200.

Background

One gap junction consists of a cluster of closely packed pairs of transmembrane channels, the connexons, through which materials of low MW diffuse from one cell to a neighboring cell.