

# CLIC4 Rabbit Polyclonal Antibody(A217)

Catalog No.: RA20221

## Basic Information

### Information

Reactivity	H,M,R
Immunogen	Synthetic Peptide
Host	Rabbit
Isotype	IgG
Storage Buffer & Condition	1mg/ml in PBS, pH 7.4, containing 0.02% sodium azide and 50% glycerol.
Observed MW	30KD

### Applications

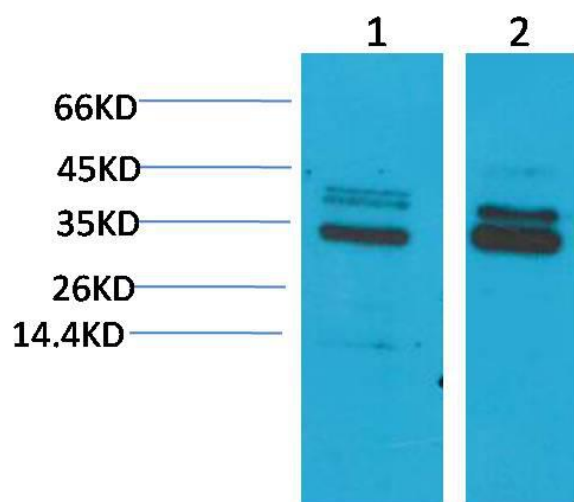
### Recommended Dilution

WB	1:1,000-2,000
IHC	1:1,000-2,000

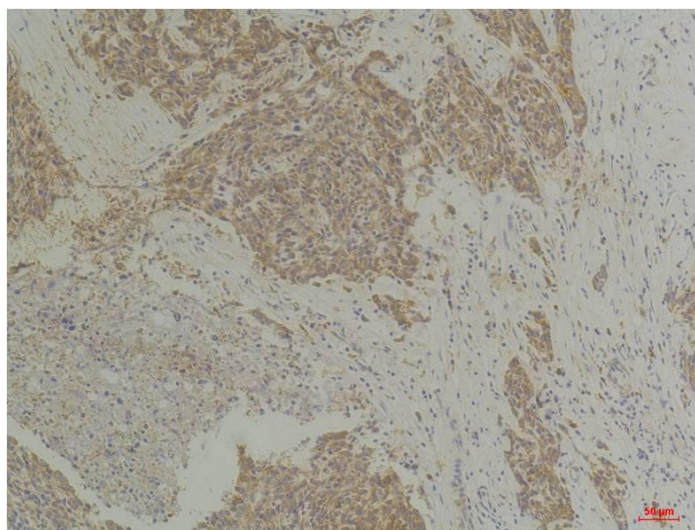
## Preparation & Storage

Storage	Store at -20°C. Stable for one year from the date of shipment.
Shipping	Bule Ice

## Experimental Data



Western blot analysis of 1)Mouse Brain Tissue, 2)Rat Brain Tissue, with CLIC4 Rabbit pAb diluted at 1:2,000.



Immunohistochemical analysis of paraffin-embedded Human Breast Carcinoma using CLIC4 Rabbit pAb diluted at 1:200.

## Background

Membrane insertion seems to be redox-regulated and may occur only under oxydizing conditions. Involved in regulation of the cell cycle.