

CaV pan α Rabbit Polyclonal Antibody(A211)

Catalog No.: RA20218

Basic Information

Information

| | |
|----------------------------|--|
| Reactivity | H,M,R |
| Immunogen | Synthetic Peptide |
| Host | Rabbit |
| Isotype | IgG |
| Storage Buffer & Condition | 1mg/ml in PBS, pH 7.4, containing 0.02% sodium azide and 50% glycerol. |
| Observed MW | 240KD |

Applications

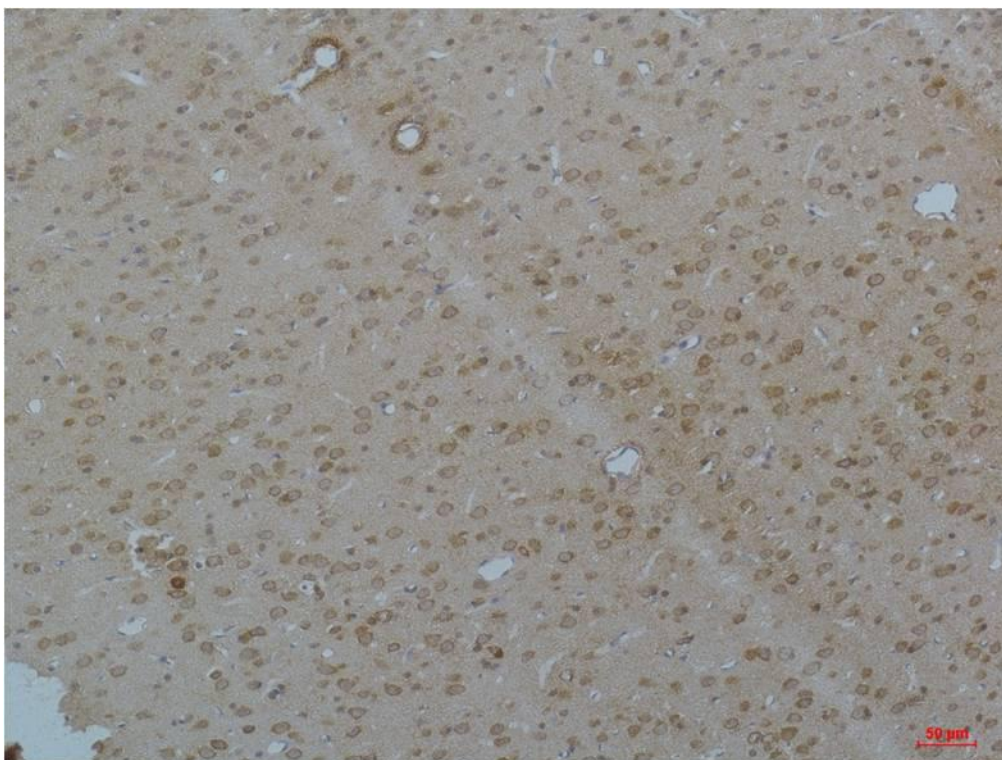
Recommended Dilution

| | |
|-----|-----------|
| IHC | 1:100-200 |
|-----|-----------|

Preparation & Storage

| | |
|----------|--|
| Storage | Store at -20°C. Stable for one year from the date of shipment. |
| Shipping | Bule Ice |

Experimental Data



Immunohistochemical analysis of paraffin-embedded Rat Brain Tissue using Cav pan $\alpha 1$ Rabbit pAb diluted at 1:200.

Background

Voltage-gated Ca^{2+} channels (CaV), enable the passage of Ca^{2+} ions in a voltage dependent manner. These heteromeric entities are formed in part by the pore-forming $\alpha 1$ subunit which determines the biophysical and pharmacological properties of the channel.