

CaV α 2 δ 2 Rabbit Polyclonal Antibody(A194)

Catalog No.: RA20211

Basic Information

Information

Reactivity	H,M,R
Immunogen	Synthetic Peptide
Host	Rabbit
Isotype	IgG
Storage Buffer & Condition	1mg/ml in PBS, pH 7.4, containing 0.02% sodium azide and 50% glycerol.
Observed MW	100-120KD

Applications

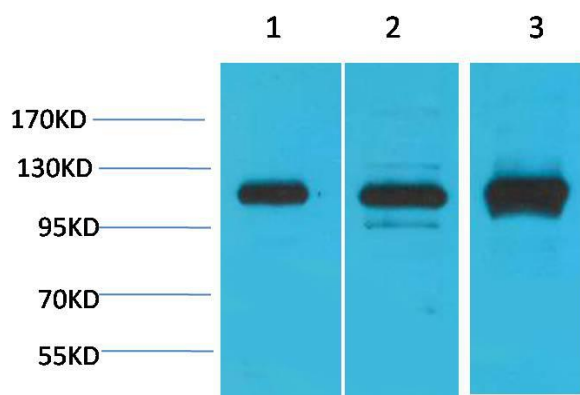
Recommended Dilution

WB	1:1,000-2,000
IHC	1:100-200

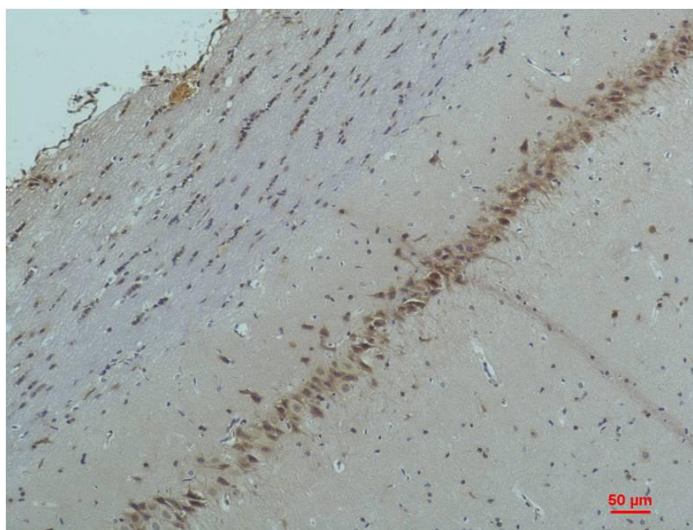
Preparation & Storage

Storage	Store at -20°C. Stable for one year from the date of shipment.
Shipping	Bule Ice

Experimental Data



Western blot analysis of 1)293T, 2)Mouse Brain Tissue, 3)Rat Brain Tissue with CABP2 Rabbit pAb diluted at 1:2,000.



Immunohistochemical analysis of paraffin-embedded Rat Brain Tissue using CaV $\alpha 2\delta 2$ Rabbit pAb diluted at 1:200.

Background

Voltage-gated Ca^{2+} channels (CaV), enable the passage of Ca^{2+} ions in a voltage dependent manner. These heteromeric entities are formed in part by the pore-forming $\alpha 1$ subunit which determines the biophysical and pharmacological properties of the channel