

CaV α 2 δ 1 Rabbit Polyclonal Antibody(A193)

Catalog No.: RA20210

Basic Information

Information

Reactivity	R
Immunogen	Synthetic Peptide
Host	Rabbit
Isotype	IgG
Storage Buffer & Condition	1mg/ml in PBS, pH 7.4, containing 0.02% sodium azide and 50% glycerol.
Observed MW	100-130KD

Applications

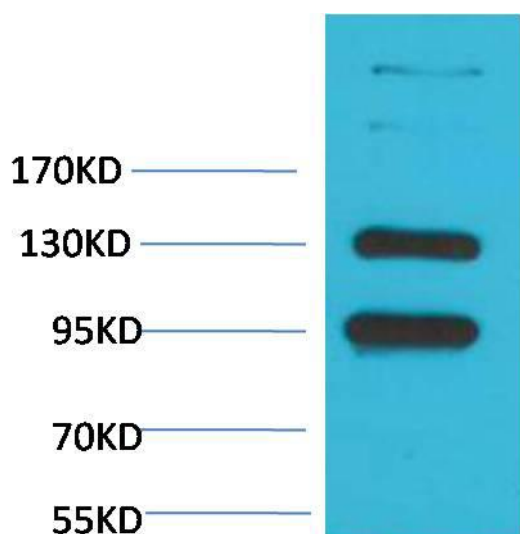
Recommended Dilution

WB	1:1,000-2,000
IHC	1:100-200

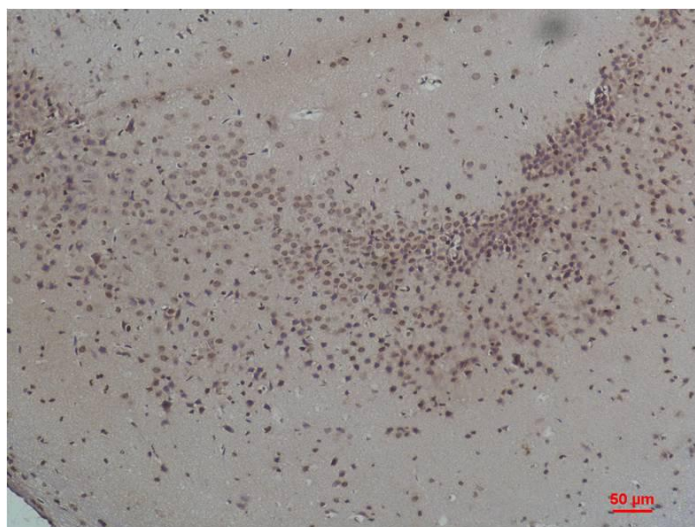
Preparation & Storage

Storage	Store at -20°C. Stable for one year from the date of shipment.
Shipping	Bule Ice

Experimental Data



Western blot analysis of Rat Brain Tissue with CaV α 2 δ 1 Rabbit pAb diluted at 1:2,000.



Immunohistochemical analysis of paraffin-embedded Rat Brain Tissue using CaV α 2 δ 1 Rabbit pAb diluted at 1:200.

Background

Voltage-gated Ca²⁺ channels (CaV), enable the passage of Ca²⁺ ions in a voltage dependent manner. These heteromeric entities are formed in part by the pore-forming α 1 subunit which determines the biophysical and pharmacological properties of the channel.