

# Bombesin Receptor 2 Rabbit Polyclonal Antibody(A187)

## Catalog No.: RA20206

### Basic Information

#### Information

Reactivity	M,R
Immunogen	Synthetic Peptide
Host	Rabbit
Isotype	IgG
Storage Buffer & Condition	1mg/ml in PBS, pH 7.4, containing 0.02% sodium azide and 50% glycerol.
Observed MW	50-70KD

#### Applications

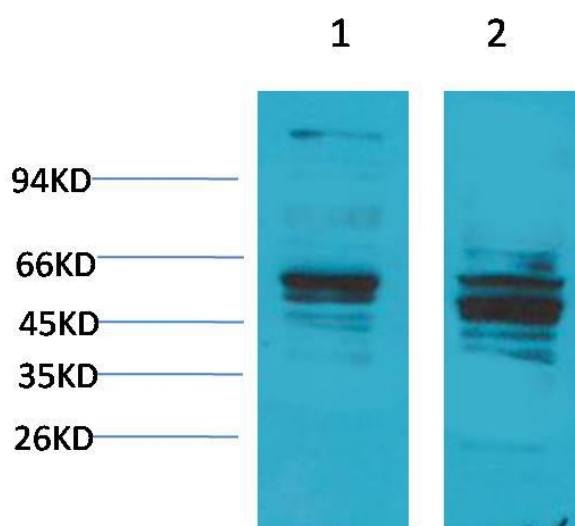
#### Recommended Dilution

WB	1:1,000-2,000
IHC	1:100-200

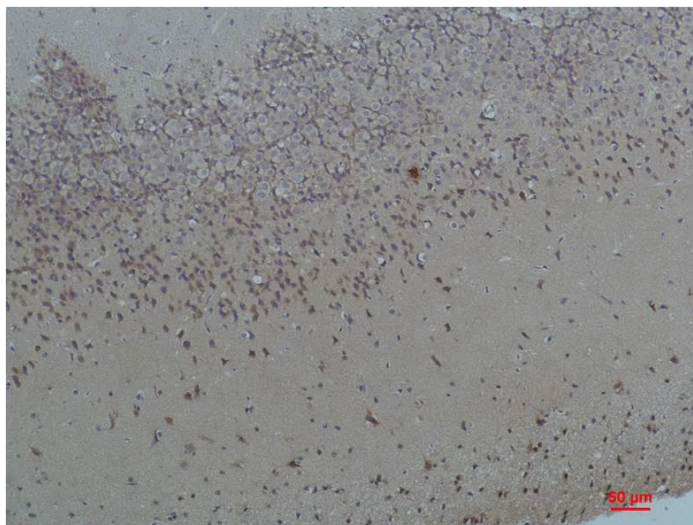
### Preparation & Storage

Storage	Store at -20°C. Stable for one year from the date of shipment.
Shipping	Bule Ice

## Experimental Data



Western blot analysis of 1) Mouse Brain Tissue, 2) Rat Brain Tissue with Bombesin Receptor 2 Rabbit pAb diluted at 1:2,000.



Immunohistochemical analysis of paraffin-embedded Rat Brain Tissue using Bombesin Receptor 2 Rabbit pAb diluted at 1:200.

## Background

Bombesin receptor 2 (BB2) is a member of a family of receptors that binds the 14 amino acid peptide, bombesin.