

Bestrophin-1 Rabbit Polyclonal Antibody(A184)**Catalog No.: RA20205****Basic Information****Information**

Reactivity	H,M,R
Immunogen	Synthetic Peptide
Host	Rabbit
Isotype	IgG
Storage Buffer & Condition	1mg/ml in PBS, pH 7.4, containing 0.02% sodium azide and 50% glycerol.
Observed MW	67KD

Applications**Recommended Dilution**

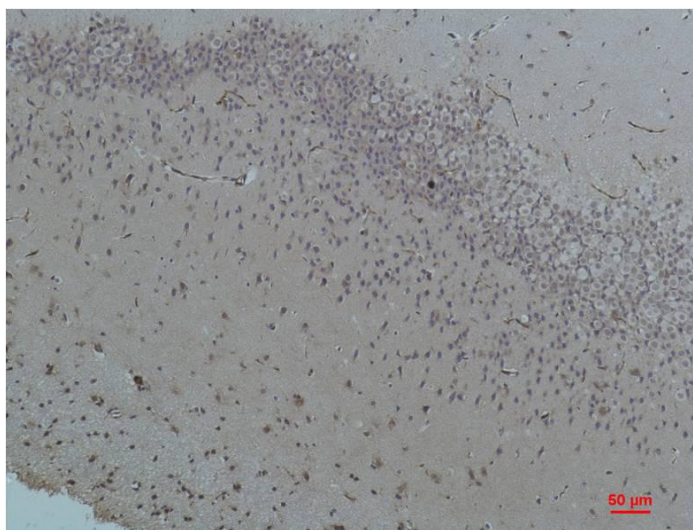
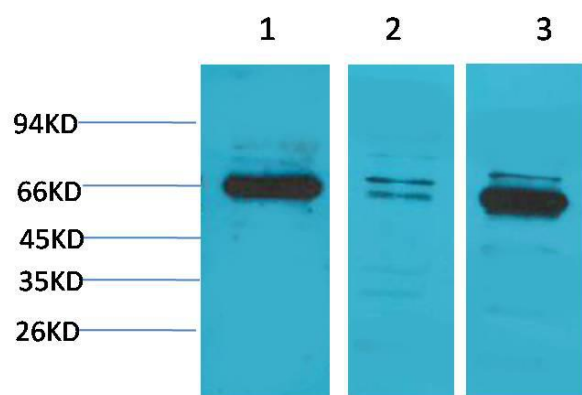
WB	1:1,000-2,000
-----------	---------------

IHC	1:50-100
------------	----------

Preparation & Storage

Storage	Store at -20°C. Stable for one year from the date of shipment.
Shipping	Bule Ice

Experimental Data



Western blot analysis of 1)PC3, 2)Mouse Brain Tissue, 3)Rat Brain Tissue with Bestrophin-1 Rabbit pAb diluted at 1:2,000.

Immunohistochemical analysis of paraffin-embedded Rat Brain Tissue using Bestrophin-1 Rabbit pAb diluted at 1:200.

Background

Bestrophins were first found by genetic linkage of human-Bestrophin-1 (hBest1) to a juvenile form of macular degeneration called Best vitelliform macular dystrophy (BVMD). Forms calcium-sensitive chloride channels.